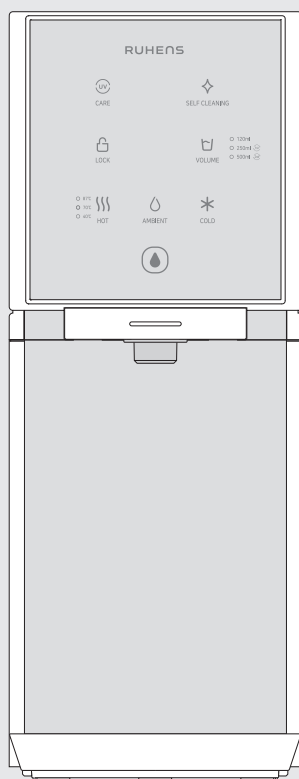


We cannot take any responsibility
for any damage caused by not using
our genuine filters or parts.

HOT & COLD WATER PURIFIER OPERATION MANUAL

WHP-3300 / WHP-3330



◆ FOR YOUR SAFETY

- Precautions 2~7




◆ FOR INFORMATION

- Features 8
- Parts Identification 9
- Filtration system 10
- Operating Instructions 11
- How to use 12~17
- Filter replacement 18~19
- Troubleshooting Guide 20~21
- Cleaning Method 22
- Specifications 23
- Warranty Card 24

※ For your safety and proper use of the product, please read this User's Manual before use.
※ Warranty card included in this Manual.

Precautions

- Please read carefully and follow all guidelines to use safely and avoid equipment damage.
- The degrees of potential danger and equipment damage that could occur by improper use are divided into 3 types as per below.

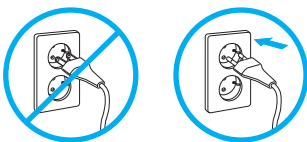
-  **Danger** : If not observed, risk of serious injury or even death.
-  **Warning** : If not observed, serious injury or property damage is possible.
-  **Caution** : If not observed, minor injury or property damage could occur.


 This warning sign is for highlighting potential risks caused by improper use. Please read carefully and follow all precautions.

Precautions for Power Supply

 **DANGER** This product must be plugged into AC220V-240V outlet.


※ Failure to do so may cause fire or electric shock.



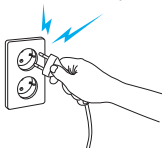
 **DANGER** Please clean dust and all foreign substances off the plug before use.

※ Failure to do so may cause fire or electric shock.



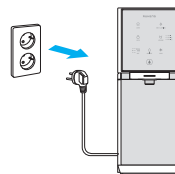
 **DANGER** DO NOT use when the plug is damaged or improperly connected.

※ Failure to do so may cause fire or electric shock.
If the plug is damaged contact your nearest customer service center or place of purchase.



 **DANGER** Please disconnect plug from socket before replacing filter.

※ Failure to do so may cause fire or electric shock.



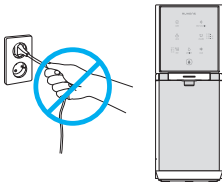
Precautions

Precautions for Power Supply



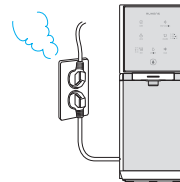
DO NOT try to bend, tie or pull the power cord.

※ Failure to do so may cause fire or electric shock.



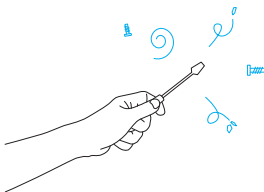
Use a single socket for the unit.

※ Do not plug multiple units into a single socket.



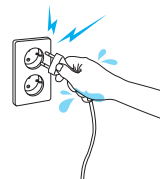
DO NOT disassemble or modify the Plug.

※ Failure to do so may cause fire or electric shock.



DO NOT touch socket with wet hands.

※ Failure to do so may cause electric shock.

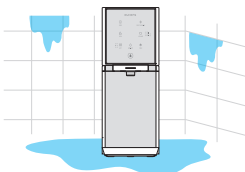


Precautions for Use



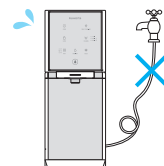
DO NOT install the unit in a high humidity area such as a bathroom, shower room or outdoors.

※ Failure to do so may cause fire or electric shock.



Keep the inlet hose free from kinks or bends.

※ Failure to do so may cause water leakage or electric shock.



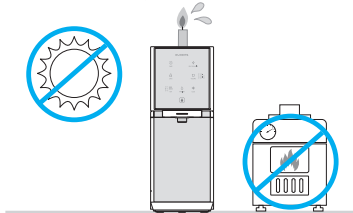
Precautions

Precautions for Installation



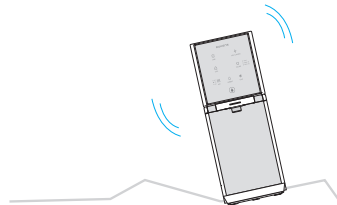
Avoid heat or direct sunlight.

※ Failure to do so may cause discoloration or deformity of the exterior.



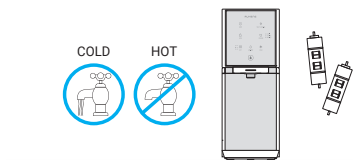
Place the unit on a level surface and hard floor.

※ Failure to comply may cause the unit to malfunction.



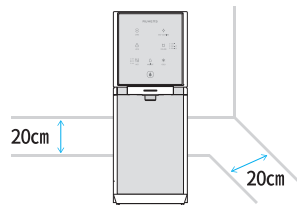
Connect the unit only to the cold water pipe.

※ It is harmful for filters to connect to the hot water.



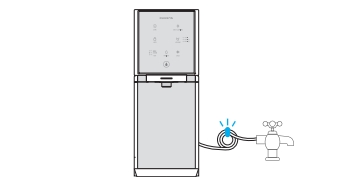
Maintain a sufficient distance from the wall for ventilation. At least 20cm is recommended.

※ Failure to comply may cause overheating.



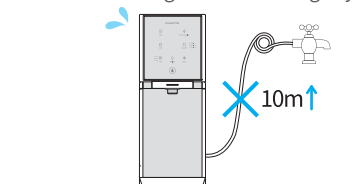
Secure the drainage hose firmly ensuring movement is not possible.

※ Failure to do so can cause water leakage or flooding.



DO NOT install the drainage hose above the product or connect the hose further than 10m distance from the unit.

※ Failure to do so can cause water leakage due to blockage of the drainage system.



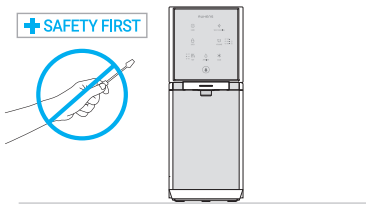
Precautions

Precautions for Use



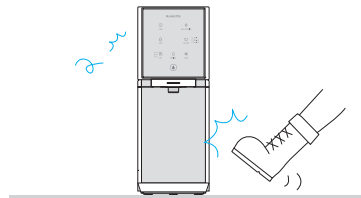
DO NOT insert sharp implements such as a screwdriver into the unit.

※ Failure to do so may cause malfunction or electric shock.



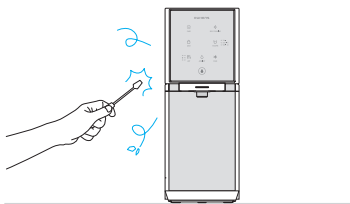
DO NOT apply force to the unit.

※ Failure to do so may cause damage or electric shock.



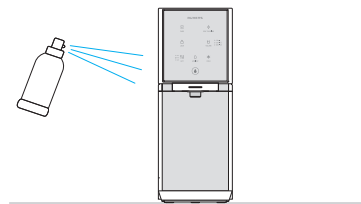
DO NOT attempt to repair, disassemble or transform.

※ Failure to do so may cause fire or electric shock.



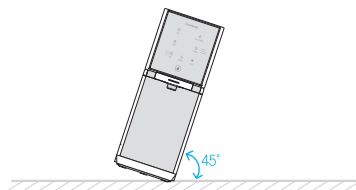
Be careful not to use harmful or abrasive chemicals during the cleaning process.

※ This could lead to damage or discoloration of the unit.



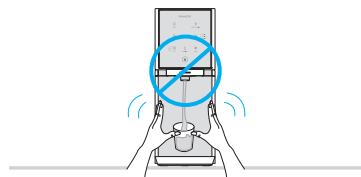
DO NOT tilt the unit more than 45° while moving it.

※ Failure to do so may cause the unit to malfunction.



Do not move the unit while in operation.

※ Failure to do so may cause the unit to malfunction.



Precautions



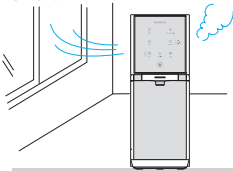
Caution is advised when using hot water.

※ Failure to do so may cause scalding



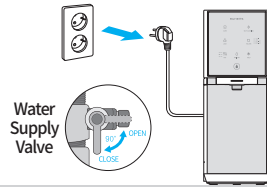
In the unlikely event of a refrigerant leak, please do not touch the power cord and ventilate the room by opening the window.

※ This product uses R-600a (Isobutane), a flammable refrigerant, used because it is environmentally friendly. If however, a gas leak occurs due to severe damage caused by careless installation, movement, or mis-use of the product, the gas may be a fire risk.



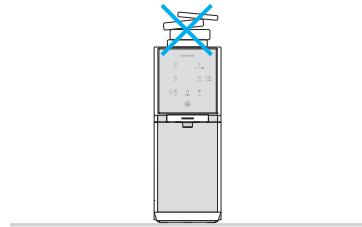
When restarting after shutting off the power or moving the product, open the water supply valve, and use it only after dispensing at least 0.5 liters of cold/ambient/hot water.

※ Failure to do so may cause a fire hazard or water leakage.



DO NOT place heavy items on top of the unit.

※ This can cause the unit to malfunction.



Precautions



- This appliance can be used by children aged 8 and above, by people with reduced physical, sensory or mental capacities if they have been instructed on how to use the product in a safe way and are aware of the potential hazards of use.
- Children are not advised to play with the product.
- Cleaning and maintenance of the product should only be performed by an adult or a child under supervision
- This appliance is intended for domestic use only.
- This appliance is suitable for use in tropical climates amongst others.



WARNING

- In order to discard the product, you must contact a certain organization specialized since the product includes combustibles (R-600a).



This symbol means a flammable material and a fire hazard.



CAUTION

- Please discard the filter in accordance with local recycling regulations.
- When installing the unit only use the manufacturer's genuine parts.
- When replacing the filter, please only use the manufacturer's genuine filter otherwise the water quality may be compromised.
- These units contain environmentally friendly refrigerant gas, Isobutane (R600a).
- Care must be observed when transporting the goods, avoiding excessive shaking or damage. Failure to do so may lead to the malfunction of the unit.
- Keep all ventilation openings on the unit free from obstruction.
- Take care not to damage the refrigerant circuit. If damage to the appliance is apparent please do not attempt to use the machine.
- In case of damage, contact the Service Centre and ventilate the room where the appliance is located. Avoid naked flames or working on the appliance.

Features

◆ Thorough filtration system

Removes contaminants, while maintaining all beneficial minerals present in the water.

- MICRO CARBON FILTER : Removes sediment particles such as dirt and sand more than 5 microns in size at the first stage of the filtration process. It also helps to absorb many harmful organic chemicals such as chlorine, bad tastes and odor.
- NANO FACT PLUS FILTER : Removes water contaminants more than 0.2 microns in size such as waterborne micro-organisms, bacteria and virus through our state-of-the-art Cellulose Nano Fiber system.

◆ Airless purification system

Due to the special airtight, direct purification method used in this unit, outside contaminants are unable to get into the water system allowing for fresher, more hygienic water to be dispensed.

◆ Self UV LED sterilization system

Sterilizes the water in the faucet for 13 minutes every 2 hours by using UV LED to ensure the cleanliness of the faucets.

◆ Self-cleaning of the water lines

Self-cleaning function of the water lines with purified water. It is advised to drain the residual water through the water line during the automatic cleaning or self-cleaning.

◆ Volume control function

Depending on your preference, you can adjust the automatic dispensing volume for 120ml, 250ml, or 500ml.

◆ Direct heating/cooling system

You can use fresh cold water of 4~12°C by the direct cooling system and hot water of up to 87°C by the direct heating system. The heater operates only when hot water dispensing, so all efforts to maximize energy savings and reduce your carbon footprint has been made.

◆ Faucet for cooking water use

You may connect the water line from the product to the faucet on the sink, in order to use clean, fresh water for cooking. (Optional)

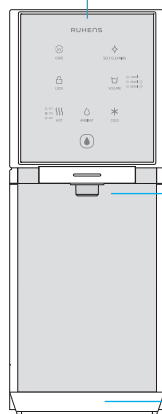
◆ Water leakage protection

Water leak detection sensor can monitor the occurrence of water leakage inside the product over time and when detected can automatically and safely block the source of water in order to avoid large scale leaking.

Parts identification

Model No. WHP-3300 / WHP-3330

Operating/Indicating Panel

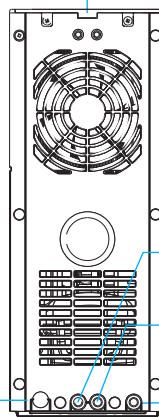


Water Faucet

Drip Tray

<Front>

Air panel cover



Kitchen sink Water connector

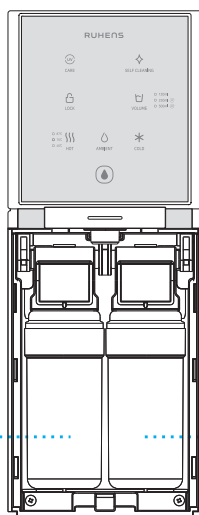
Cold Water Drain (OUT) Port

Feed Water (IN) Port

Power Plug

<Back>

MICRO CARBON FILTER



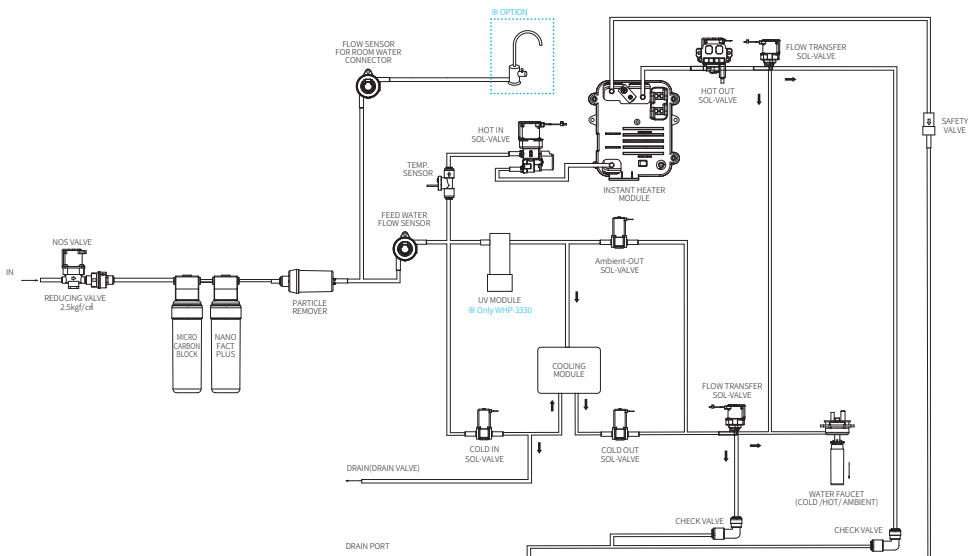
NANOFACT PLUS FILTER

Filtration system

Filter replacement cycle

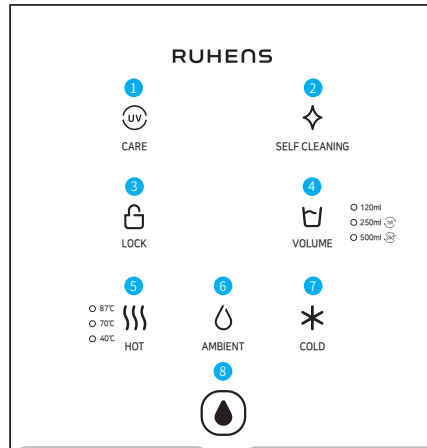
DIVISION	1ST STEP	2ND STEP
Filter name	MICRO CARBON FILTER	NANOFACT PLUS FILTER
Expected Replacement	2,400 liters or 6 months	4,800 liters or 12 months
Material	PP + Compressed carbon	Cellulose + Compressed carbon
Function	Removing sediment particles more than 5µm in size and absorbing harmful organic chemicals.	Removing water contaminants greater than 0.25µm in size such as waterborne bacteria and virus.

FILTRATION SYSTEM



- Because Fitting/Tubing/Float valve/Etc.
Are consumable parts, when replacing filters, replace them too.
※ 2 years of replacement cycle
※ Failure to replace them may result in property damage through water leakage.
- Working water pressure : Min. 147kPa, 3.0ℓ/min

Operating Instructions



① UV INDICATOR

1. Holding the 'CARE' button for 3 seconds, will deactivate the UV sterilization function.
2. If UV sterilization function is activated, the indicator light is illuminated and if it is deactivated, the indicator light is off.
3. When the UV sterilization function is operated, the indicator blinks. It sterilizes the water faucet, which is concerned about bacterial growth, by UV LED.

② SELF CLEANING INDICATOR / BUTTON

1. Hold this button for 3 seconds, to activate the self-cleaning function.
2. If UV sterilization function is activated, the indicator light is illuminated and if it is deactivated, the indicator lights is off.
3. When the UV sterilization function is operating the indicator blinks. It sterilizes the water faucet, which may be susceptible to bacteria growth, by UV LED.

③ LOCK INDICATOR / BUTTON

1. Holding this button for 3 seconds, results in the ability to lock or unlock all operating buttons.
2. When the lock function is activated, all buttons are deactivated until the 'LOCK' button is deactivated.

④ VOLUME INDICATOR / BUTTON

- Touch this button to set the desired volume of water. The volume changes with each touch.
- ※ When no volume is selected, 120ml water is dispensed if you touch the dispensing button.

⑤ HOT WATER INDICATOR / BUTTON

1. Hot water can be adjusted as three different temperatures by touching this button in the hot water mode. The hot water temperature LED will illuminate, according to the selected temperature. (40°C, 70°C, 87°C)
2. By holding this button for 3 seconds, you can lock or unlock the 'HOT' button.

⑥ AMBIENT WATER INDICATOR / BUTTON

- By touching this button, the ambient 'LED' blinks and you can dispense ambient water.

⑦ COLD WATER INDICATOR / BUTTON

1. By touching this button, the cold LED blinks and you can dispense cold water.
2. By holding this button for 3 seconds, you can activate or deactivate the cold water function.

⑧ DISPENSING INDICATOR / BUTTON

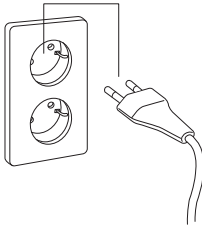
1. Touch this button to get the desired water.
2. On dispensing, the dispensing LED blinks.
 - Dispensing quantity: After selecting the quantity with the volume button, touch the dispensing button once to dispense the selected volume.
 - Continuous water dispensing: Hold the dispensing button for 3 seconds to dispense as much as 1,500ml. ※ During preset volume dispensing or continuous dispensing, by touching the dispensing button, dispensing stops immediately.

How to use

※ For your safety and proper use of the product, please read and understand the following before use.

1. Plug the power cord.

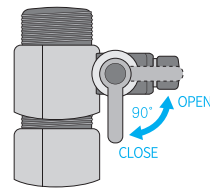
※ Before plugging, please check if the voltage rate matches the socket.



2. Open the water supply valve.

※ If the water supply valve is closed, the water purifier won't work.

(Except in the case of leaving the unit unused for a prolonged period leave the valve open.)

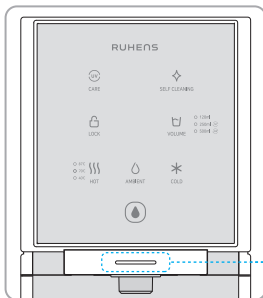


INITIAL SET-UP

1. AUTOMATIC FILTER FLUSHING

- ▶ On unit installment, the automatic filter flushing function needs to be performed. When powering on the unit, the ambient water and the cold water needs to have approximately 2 liters flushed out.
- It will take 6~7 minutes (Depending on the water pressure).

※ Before plugging in the power cord, please ensure that the unit is properly connected to a water source.



※ While automatic filter flushing is activated, the dispensing LED blinks white.



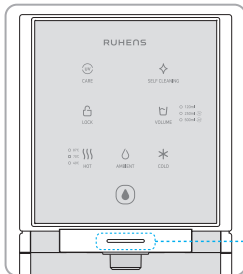
If you do not complete the filter flushing process, there may be issues with the water quality being initially dispensed.

- ▶ Please take care to ensure that the water is correctly connected to the water source and that water dispenses through the faucet.

※ The filter flushing cycle will only be activated when the unit is plugged back into the mains.

How to use

INITIAL SET-UP



2. AUTOMATIC COOLANT SYSTEM

- ▶ Upon installation the automatic coolant system operates to chill the water to the desired temperature. After filter auto-flushing and activating the hot water, the automatic coolant system function will activate.
 - The cooling function will take 1~3minutes. (Depending on the water pressure.)
- ※ Before reconnecting the power cord, please ensure that the water is correctly connected to the water source.
- ※ While the automatic coolant system is in operation, the dispensing LED blinks white.



3. AUTOMATIC RESET FUNCTION FOR HOT WATER

- ▶ On unit installment or hot water temperature error, the automatic reset function for instant heater will be activated. When filter auto-flushing is completed, the automatic reset function for instant hot water will operate.
 - It will take 50~80 seconds.(Depending on the water pressure.)
- ※ When operating the automatic reset function, please do not forget to connect the tubing on the drain port, in order to drain out the 0.5l of water in the unit.
- ※ On resetting of the hot water function, the dispensing LED blinks on red.



■ After the initial installation, it is recommended to dispense at least 500ml of ambient, cold and hot water prior to use.

- ▶ When the corresponding water line is filled with water, the water is discharged.



If hot water initialization is not completed, it automatically proceeds upon first requested dispensing of hot water

- ▶ Hot water initialization occurs when using hot water after water supply disruption or hot water related error occurs during use.

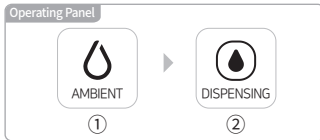
※ This is a safety function to prevent instantaneous hot water module failure.

If the automatic coolant filling is not completed, the automatic filling operation is performed periodically.

- ▶ Cold water will not be produced unless the coolant autofill is complete.

How to use

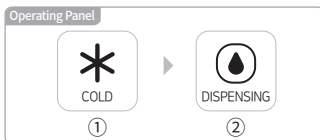
1) TO DRINK AMBIENT WATER



- ① If touching the 'AMBIENT' button, the ambient LED will blink and the dispensing LED will light on green.
- ② Touch the 'DISPENSING' button to dispense ambient water. During dispensing water, the dispensing LED will blink on green.

※ If any volume is not selected, 120ml water is dispensed with touching the 'DISPENSING' button one time.
During dispensing water, you can stop dispensing water by touching the 'DISPENSING' button.

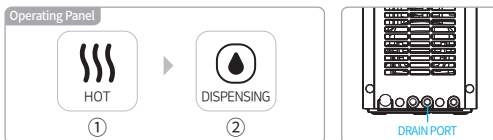
2) TO DRINK COLD WATER



- ① If the cold LED lights on, cold water may be dispensed.
- ② If touching the 'COLD' button, the cold LED will blink and the dispensing blue LED will be illuminated.
- ③ Touch the 'DISPENSING' button to dispense cold water. During dispensing water, the dispensing LED will blink on blue.

※ On the initial installment, make sure to check whether water comes out while in the cold water mode.

3) TO DRINK HOT WATER



- ① Touch the 'HOT' button to select the desired hot water temperature.
- ② Touch the 'DISPENSING' button to dispense hot water. During dispensing water, the dispensing LED will blink on red.

※ Because this product heats water by the instant heating system, it takes a few seconds to dispense the hot water. (the maximum waiting time is 14 seconds.)

※ When dispensing hot water, place the cup/bottle close to the water faucet. If not, it may cause scalding.

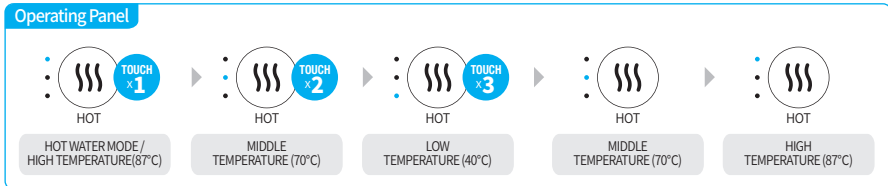


Please do not dispense hot water while simultaneously using the water in other area of the house.

- If used at the same time, the flow rate decreases and the hot water supply is forcibly stopped to protect the product.
- If the low flow is detected, when using hot water next time, select the hot water function and touch the water outlet button to take in 120ml of water.

How to use

3-2) TO SET TEMPERATURE OF HOT WATER

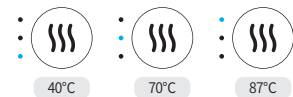


- ① Touch the hot button to select the hot water mode.
- ② Repeated touching of the hot button in the hot water mode changes the temperature of hot water, to the next temperature in sequence.
(40°C → 70°C → 87°C → 40°C)

※ It maintains the selected hot water temperature until to touch the hot water button again.

※ If the lock function is activated, hot water temperature cannot be selected. Deactivate the lock function first to select the hot water temperature.

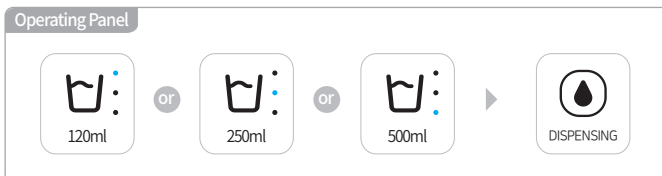
Hot water temperature



※ If any temperature for hot water is not selected, the highest temperature water (87°C) is dispensed.

※ The hot water temperature may vary depending on the feed water's temperature.

4) FOR PRESET VOLUME DISPENSING / COUNTINUOUS DISPENSING



- ① HOW TO SET THE DESIRED QUANTITY OF WATER
Touch the volume button to set the desired volume water and touch the dispensing button.
※ one bar(120ml) is set by default.
- ② HOW TO USE CONTINUOUS DISPENSING
When holding the dispensing button for 3 seconds, up to 1,500 liters may be dispensed.
This is accompanied by a buzzing sound.

5) FOR COLD FUNCTION ON/OFF

- ① Hold the 'COLD' button for 3 seconds to activate or deactivate the cold water function.

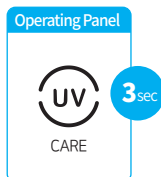
6) BUTTON LOCK MODE

- ① Hold the 'HOT' button for 3 seconds to activate or deactivate the hot lock function.
- ② When the hot water LED is on, hot water can be selected, and when the hot water LED is off, hot water button is locked and it's unable to select the hot water mode.

How to use

7) UV STERILIZATION

※ To enhance hygiene of the faucet, the UV LED operates periodically.



- ① By holding the 'CARE' button for 3 seconds, the UV LED turns ON or OFF with voice guidance.
- ② If UV LED is ON, the automatic UV sterilization function is activated, and if the indicator is OFF, the UV sterilization function is deactivated.
 - ※ When powering on the unit, it operates automatically after completing the initial set-up of the product.
 - ※ Following this, the UV sterilization function operates automatically every 2 hours.
 - ※ When the UV sterilization function is operating, the UV LED blinks.

8) UVC sterilization (WHP-3330)

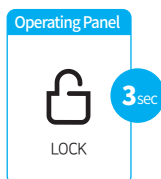
- ① UVC sterilizes the water line for the cold water and ambient water.
- ② UVC sterilization operates when (1) dispensing cold water/ambient water, (2) on filter flushing operation, and (3) on water line cleaning operation.
- ③ With the exception of being in (2) filter flushing mode, the UVC sterilization system will operate automatically every 2 hours.
 - ※ When initially turning on the unit, it automatically operates every 2 hours upon completion of the initial set-up.

9) WATER LINE CLEANING



- ① As the default, the automatic water-line cleaning function is activated, and the water line for the ambient water and the cold water is automatically cleaned every 6 hours.
- ② By holding the 'SELF CLEANING' button for 3 seconds, the LEDs turn ON or OFF with voice guidance.
- ③ If self-cleaning LED lights ON, the automatic self-cleaning function is activated, and if the indicator is OFF, the self-cleaning function is deactivated.
 - ※ The self-cleaning LED blinks during automatic cleaning of the water line.
 - ※ The automatic water line cleaning operation takes about 10 seconds, and it's not possible to dispense water during the cleaning operation.

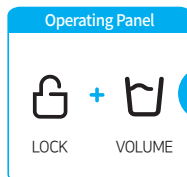
10) BUTTON - LOCK MODE



- ① By holding the 'LOCK' button for 3 seconds, the lock LED turns ON or OFF with voice guidance.
- ② If lock LED light is ON, the lock function is activated, and if the LED light is OFF, the lock function is deactivated.
- ③ When the lock function is activated, all buttons are inoperable until the 'LOCK' function is deactivated.

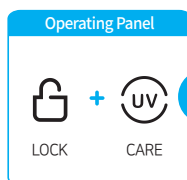
How to use

11) TO DRINK AMBIENT WATER



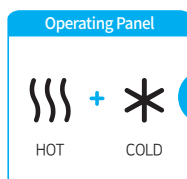
- ① Hold the 'LOCK' and 'VOLUME' button for 3 seconds, to enter the default option change mode.
- ② Change the default for COLD/AMBIENT water mode and VOLUME (120ml / 250ml / 500 ml)
 - ※ When cold water is selected, the 'DISPENSING LED' light on blue, and when ambient water is selected, the 'DISPENSING LED' light on GREEN.
 - ※ The 'VOLUME LED' blinks only for the selected volume, and the non-selected volume LEDs light is off.

12) BUZZER ON/OFF FUNCTION



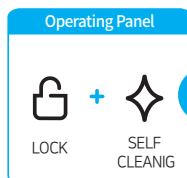
- ① Hold the 'LOCK' and 'CARE' button for 3 seconds, to turn on or off the buzzer.
- ② When the buzzer function is activated/deactivated, the voice guidance for the buzzer function setting/disabling is activated, and all LEDs on the display panel blink 3 times.
 - ※ When the buzzer function is deactivated, only the buzzer sound is OFF, and the voice guidance remains.

13) VOLUME CONTROL FOR VOICE GUIDANCE



- ① Hold the 'HOT' and 'COLD' button for 3 seconds, to enter the volume control mode for the voice guidance.
- ② When touching the 'HOT' button, the volume level decreases, and when touching the 'COLD' button, the volume level increases.
- ③ It's possible to control the volume level for a total of 6 levels from 0 to 5.
- ④ After selecting the desired volume level, touch the 'DISPENSING' button to complete the set-up.
 - ※ Even if you do not touch the 'DISPENSING' button, the changed setting is applied after 5 seconds.
 - ※ When the volume level selects level 0, the voice guidance function is turned off.

14) LED BRIGHTNESS CONTROL

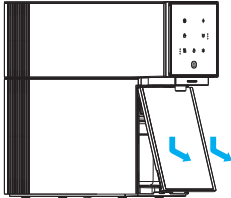


- ① If you hold the 'LOCK' button and 'SELF CLEANING' button for 3 seconds, the LED brightness lowers.
- ② When the LED brightness is dim, hold the 'LOCK' button and the 'SELF CLEANING' button for 3 seconds to increase the LED brightness.

Filter replacement

1. Open the front filter cover for the filter replacement.

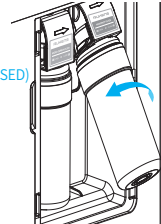
- ※ The mains water cut-off valve operates this product to shut off the water supply.



2. Lift up the filter, and turn it counterclockwise to remove it from the filter head.

※ FILTER REPLACEMENT CYCLE

- MICRO CARBON : 4 MONTHS
- NANOFACT PLUS : 12 MONTHS
- (Based on 10ℓ / 1 DAY, 4 PEOPLE BASED)



3. Remove the protection cap of the new filter and insert the new filter into filter connector by turning it clockwise.

※ Precautions for the filter replacement

- 1) When replacing filters, position the filter as shown in Figure ① and insert it into the filter head.
- 2) After mounting on the filter head and turning it clockwise, check that the positions of the arrows on the filter head and filter match or not. (Corresponding to Figure ②)

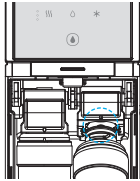


FIGURE ①

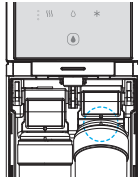
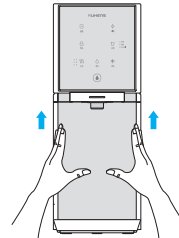


FIGURE ②

4. When the filter cover is closed, approximately 2 liters of water are automatically drained to flush the filter.

- ※ There is voice guidance activated for the start of the filter flushing and cleaning completion
- ※ The product cannot be in operation during filter cleaning, and can only be in operation again after cleaning is completed.



ALARM FOR FILTER REPLACEMENT

Operating Panel



3sec

- When the filter replacement cycle has been completed, together with voice guidance, '250ml LED' blinks for the 1st filter(Micro carbon filter) and '500ml LED' blinks for the 2nd filter (Nanofact plus filter) to notify that the filter must be replaced. The filter should be replaced when either of below conditions are reached.

FILTER NAME		Expected Replacement Cycle
1ST FILTER	MICRO CARBON FILTER	2400 liters or 6 months
2ND FILTER	NANOFACT PLUS FILTER	4800 liters or 12 months



Filter replacement

ALARM FOR FILTER REPLACEMENT



- ① Hold the “LOCK” and “AMBIENT” button for 3 seconds to enter the filter reset mode. If you have entered in the filter reset mode, the ‘AMBIENT LED’ blinks.
- ② When holding HOT or Cold button for 3 seconds to reset the filter replacement cycle, one of the intended filter in the below table will be reset.
- ③ When resetting the filter replacement cycle for the 1st filter (Micro carbon filter), the ‘HOT LED’ and ‘250ml LED’ light is off.
- ④ When resetting of the filter replacement cycle for the 2nd filter (Nanofact plus), the ‘COLD LED’ and ‘500ml LED’ light is off.
- ⑤ You exit the filter reset mode when holding the “LOCK” and “AMBIENT” button for 3 seconds again.

FILTER NAME		BUTTON FOR RESET
1ST FILTER	MICRO CARBON FILTER	COLD
2ND FILTER	NANOFACT PLUS FILTER	HOT

CAUTIONS FOR FILTER REPLACEMENT

- According to the filter replacement cycle, replace filters regularly.
- If filters are not regularly replaced, it could degrade the water quality.
- The filter replacement cycle may vary depending on feed water quality and consumption.
- Even if your water consumption is low, following the regular filter replacement cycle is recommended.
- The effective filtration amount means the minimum processing capacity at which contaminants can be effectively removed without cleaning, regenerating, or replacing the filter.
- Residual water may come out when the filter is removed. Close the filter cover only after wiping off any remaining water.

Troubleshooting Guide

※ Check the following before asking A/S.

Problem	Cause	Possible Solution
Cold water doesn't dispense	Check 'COLD LED'	Make sure that the 'COLD LED' light is on. If the light is off, hold the 'COLD' button for 3 seconds to activate the cold water function.
Hot water doesn't dispense	Check 'HOT LED'	Check whether the lock function for the hot water is activated or not, and make sure that the 'HOT LED' light is on. If the light is off, hold the 'HOT' button for 3 seconds to disable the lock function for the hot water.
In the event of a 'hissing sound' coming from the machine. This is due to the safety valve being activated due to a build up of steam.	Low water supply due to bending or restrictions of the connection hose.	Please check the hose and ensure there are no bends or kinks restricting the flow. If there is no problem in the hose connection, please contact customer service center.
	High power supply	Please check voltage rate.
Hot water cut-off during operation	Filter replacement period has been reached or the level of water flow is low.	Please check the filter replacement time and contact customer service center.
	Under normal usage	Hot water may be cut off because the unit is constructed without a water tank and heats water as it is being dispensed. It is not a malfunction. ※ To prevent burning, put the cup close to the faucet while dispensing hot water.
	When used simultaneously with other mains water	If other mains water (kitchen tap) is used at the same time as the unit. The unit will not dispense,. It is not a malfunction.
No water is dispensed	Filters need to be replaced.	Check the filter replacement cycle and contact customer service center.
	Tap Water is shut off.	Disconnect power plug and wait until water comes out.
	Connecting hose restricted	If there is a bending or kinking in the connection host, please correct this.
Low volume of purified water		The amount of water may vary according to water pressure. ※ Standard Water Pressure : 1.5 kgf/cm ² (147 kPa) (In case of low pressure of the feed water, it is recommended to use the tank type water purifier.)

Troubleshooting Guide

※ Check the following before asking A/S.

Problem	Cause	Possible Solution
Noise during operation	Working sound of compressor	When the compressor works or stops, there may be noise like water flowing. This noise comes from refrigerant flowing and it is not a malfunction.
	Boiling Noise	While operating the heater, there may be a boiling noise and it is not a malfunction.
Unpleasant water taste or odors	The water filtration device has not been used for a long time.	Get rid of residual water in the water purifier by dispensing over 500ml of each hot/cold/ambient water. If this does not resolve the issue, please contact the local service center.
	Prolonged usage in an unsuitable environment.	Replace all the filters and connecting hoses. If this issue is not resolved, please contact to the local service center.
Particles in water	Excessive bubbles occur in the water during dispensing.	After 10 minutes, if the particles remain, contact customer service center.

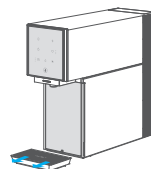
※ If a problem arises, contact a customer service center and get filter replacement or repair service.

※ We can not take responsibility for any damage caused by replacing filters by third party who is not an authorized service man.

Cleaning Method

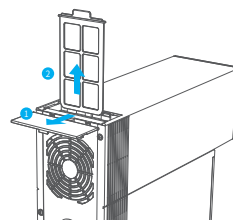
1. Cleaning the drip tray

- ① Please empty out the drip tray once a week.
- ② Detach the drip tray by pulling out it and wash it with a pH-neutral detergent.



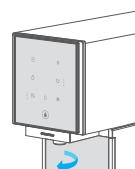
2. Cleaning the air filter

- ① After turning off the power and closing the water supply valve, push back the rear cover on the top of the product, and take it out by holding the handle of the air filter.
- ② Remove dirt and dust from the air filter by using a vacuum cleaner once a month.
- ③ After re-installing the air filter, close the cover firmly.



3. Cleaning the faucet

Detach the faucet and wash in running water and dry it with a dry dish towel.



Cleaning Cycle

Cleaning	Cycle	Method
Exterior	Once a week	Clean the exterior with water-soaked, soft cloth. (Never use harsh chemicals to clean the unit.)
Drip tray	Frequently	Frequently clean the drip tray with a neutral detergent.
Fittings/ Tubing	More than once every 2years	Change the fitting and tubing once every two years when you replace filters.
Water faucet	Daily	Detach the water faucet by turning it counterclockwise and wash in running water.
Air filter	Once per 6 months	After removing the air filter, wash it with water and dry it.

Specifications

Product Name	HOT & COLD WATER PURIFIER
Model No.	WHP-3300 / WHP-3330
Power Supply	AC 220-240V , 50/60 Hz
External dimensions	160(W)*508(D)*420(H)mm
Product weight	11.7 kg
Recommended water consumption	10ℓ / a day (4 people based)
Cold water temperature	about 4°C-12°C
Heater power consumption	2,100-2,500 W
Motor power consumption	90W(0.7A)
Hot water capacity	Instant heating system
Hot water temperature	40°C- 87°C(Selectable)
Service condition	Working pressure : 147~490kPa
	Working temperature : 5~35°C
	Usable feed water : Tap water

Warranty Card

PRODUCT WARRANTY

Product	Model	<input type="checkbox"/> WHP-3300 <input type="checkbox"/> WHP-3330
	Date of Manufacture	
Date of Purchase	Year	Month Day
Customer's Name		
Dealer's Name		

WARRANTY GUIDE

1. The warranty period is 12 months from date of purchase.
 2. In the following circumstances, the product will be repaired at cost.
 - a) After expiry of free warranty period.
 - b) Malfunction caused by careless or abnormal use.
 - c) Malfunction caused by natural disaster.
 - d) In case this manual has been lost.
-

MEMO

MEMO

MEMO