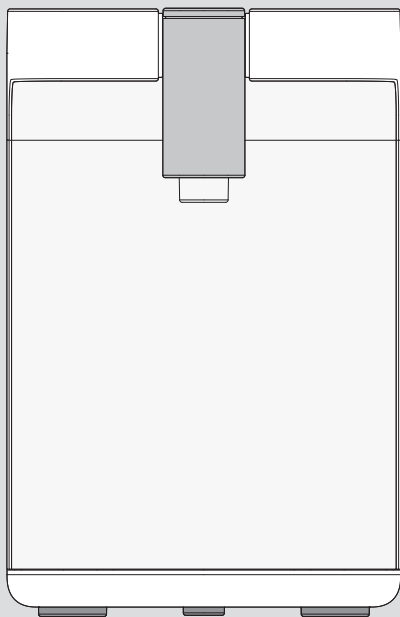


We cannot take any responsibility
for any damage caused by not using
our genuine filter or part.

HOT&COLD WATER PURIFIER OPERATION MANUAL

WHP-3700 / WHP-3710



◆ FOR YOUR SAFETY

- Precautions 2~7

◆ FOR INFORMATION

- Name of each part 8
- Filtration system 9~10
- Features 11
- WHP-3700 Operation/Indication part 12
- WHP-3700 How to use 13~15
- WHP-3710 Operation/Indication part 16
- WHP-3710 How to use 17
- Contactless(Optional) How to use 18
- Filter replacement 19~20
- Solution common problems 21~23
- Cleaning method 24
- Specification 25
- Warranty card 26

※ Please read the instruction carefully for your safety.
※ Please keep this manual as it contains the product warranty card.
※ RUHENS is not responsible for any damage caused by use of non-genuine filter.

Precautions

Please read carefully following precautions to avoid unpredictable dangers and damages.

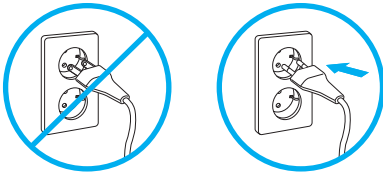
Depending on the degree of danger and damage that could occur by improper use, precautions are divided into 3 types as below.

- ! Danger** : If not observed, serious injury or even death could occur.
- ! Warning** : If not observed, serious injury or property damage could occur.
- ! Caution** : If not observed, slight injury or property damage could occur.
-
- ! This mark is for calling attention to dangers caused by improper use.**
Please read carefully and follow the precautions.

Precautions for Power Supply

! Danger This product must be plugged into AC220V-240V outlet.

※ Failure to do cause a fire or electric shock.



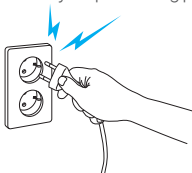
! Danger Before operation, wipe dust or other foreign substances off on the plug.

※ Failure to do cause a fire or electric shock.



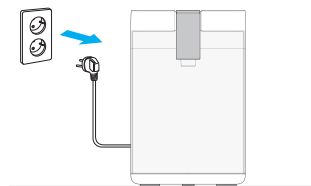
! Danger DO NOT use when the plug is damaged or swinging.

※ Failure to do cause a fire or electric shock.
※ When the plug is damaged, contact customer service center or your purchasing place.



! Danger Before replacing filter, unplug the power cord.

※ Failure to do cause electric shock.



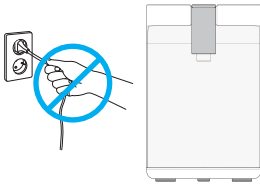
Precautions

Precautions for Power Supply



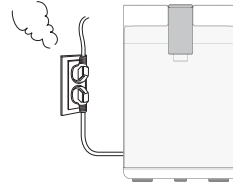
DO NOT try to bend, tie or pull the power cord.

※ Failure to do cause a fire or electric shock.



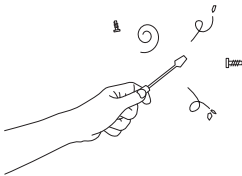
The outlet should be rated for more than 16A.
Use a separate outlet for the unit.

※ Do not plug too many cords into the outlet, failure to do cause a fire.



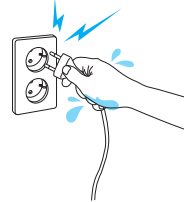
DO NOT disassemble or modify the plug.

※ Failure to do cause a fire or electric shock.



DO NOT plug in or unplug the power cord with wet hands.

※ Failure to do cause electric shock.

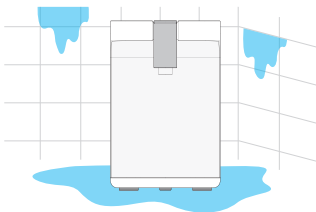


Precautions for Use



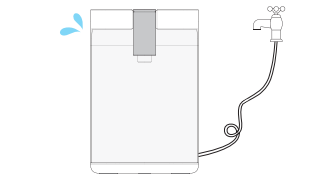
DO NOT install the unit at a moist place like bathhouse, shower room or outdoor.

※ Failure to do cause a fire or electric shock.



DO NOT let the inlet hose be twisted or bended.

※ Failure to do cause water leakage or electric shock.
※ The new hose-sets enclosed with the water purifier should be used instead of an old hose-sets.



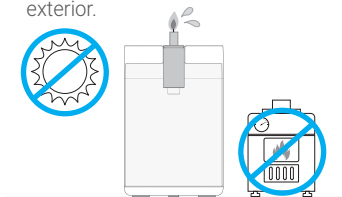
Precautions

Precautions for Installation



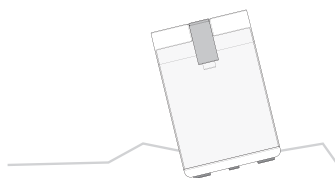
Avoid heat or direct sunlight.

※ Failure to do cause a deformation of exterior.



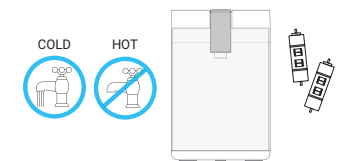
Place the unit on a level surface and hard floor.

※ Failure to do cause malfunction.



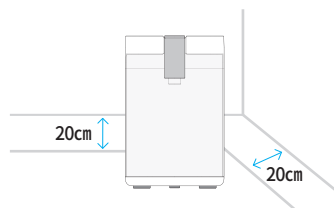
Connect the unit only to the cold water pipe.

※ It is harmful for filters to connect to the hot water.



Maintain a sufficient distance from the wall for ventilation.
At least 20cm is recommended.

※ Failure to do cause malfunction.

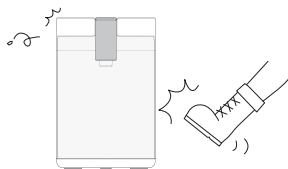


Precautions for Use



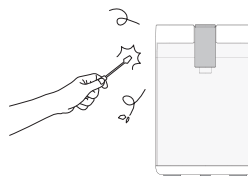
DO NOT apply force to the unit.

※ Failure to do cause malfunction, damage or electric shock.



DO NOT attempt to repair, disassemble or transform the unit.

※ Failure to do cause a fire or electric shock.



Precautions

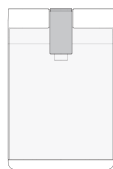
Precautions for Use



Danger DO NOT insert sharp wire or screwdriver into the unit.

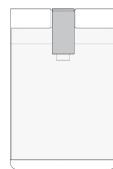
※ Failure to do cause malfunction or electric shock.

+ SAFETY FIRST



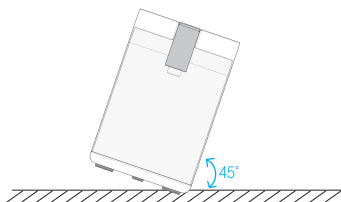
Warning Be careful not to get burned by the hot water.

※ Failure to do cause scald.



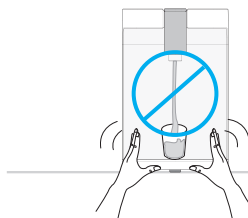
Caution DO NOT tilt the unit more than 45° while moving it.

※ Failure to do cause malfunction.



Caution DO NOT move the unit during the operation.

※ Failure to do cause malfunction.

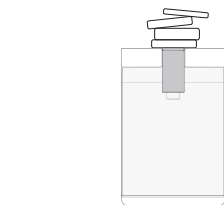


Precautions for Installation



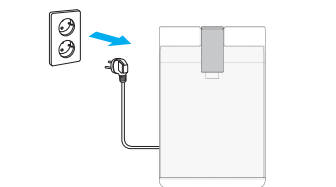
Caution DO NOT put heavy stuff on the unit.

※ Failure to do cause damage to the unit.



Caution When water supply is cut off, unplug the power cord.

※ Failure to do cause malfunction.



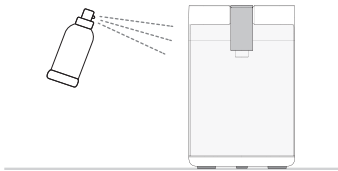
Precautions

Precautions for Use



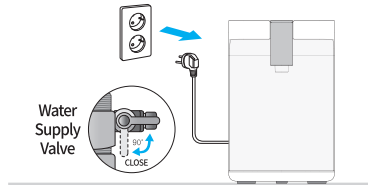
Never use benzene or gasoline to clean the unit.

※ Failure to do cause discolor, peeling and damage of the unit.



Close the main water supply valve and unplug the power cord when not using the unit for a long time. Before use it again, drain more than 3 liters of hot and cold water.

※ Failure to do cause a fire or water leakage.



- This appliance can be used by children aged from 8 years and above and people with reduced physical, sensory or mental capabilities or lack of experience and knowledge if they have been supervised or instructed of the appliance in a safe way and understand the hazards involved.
- Children shall not play with the appliance.
- Cleaning and user maintenance shall not be made by children without supervision.
- This appliance is intended to be used in household and similar applications.
- The instructions state that the appliance is to be supplied through a residual current device (RCD) having a rated residual operating current not exceeding 30mA.
- The instructions state that the appliance is considered to be suitable for use in countries having a tropical climate, but may also be used in other countries.

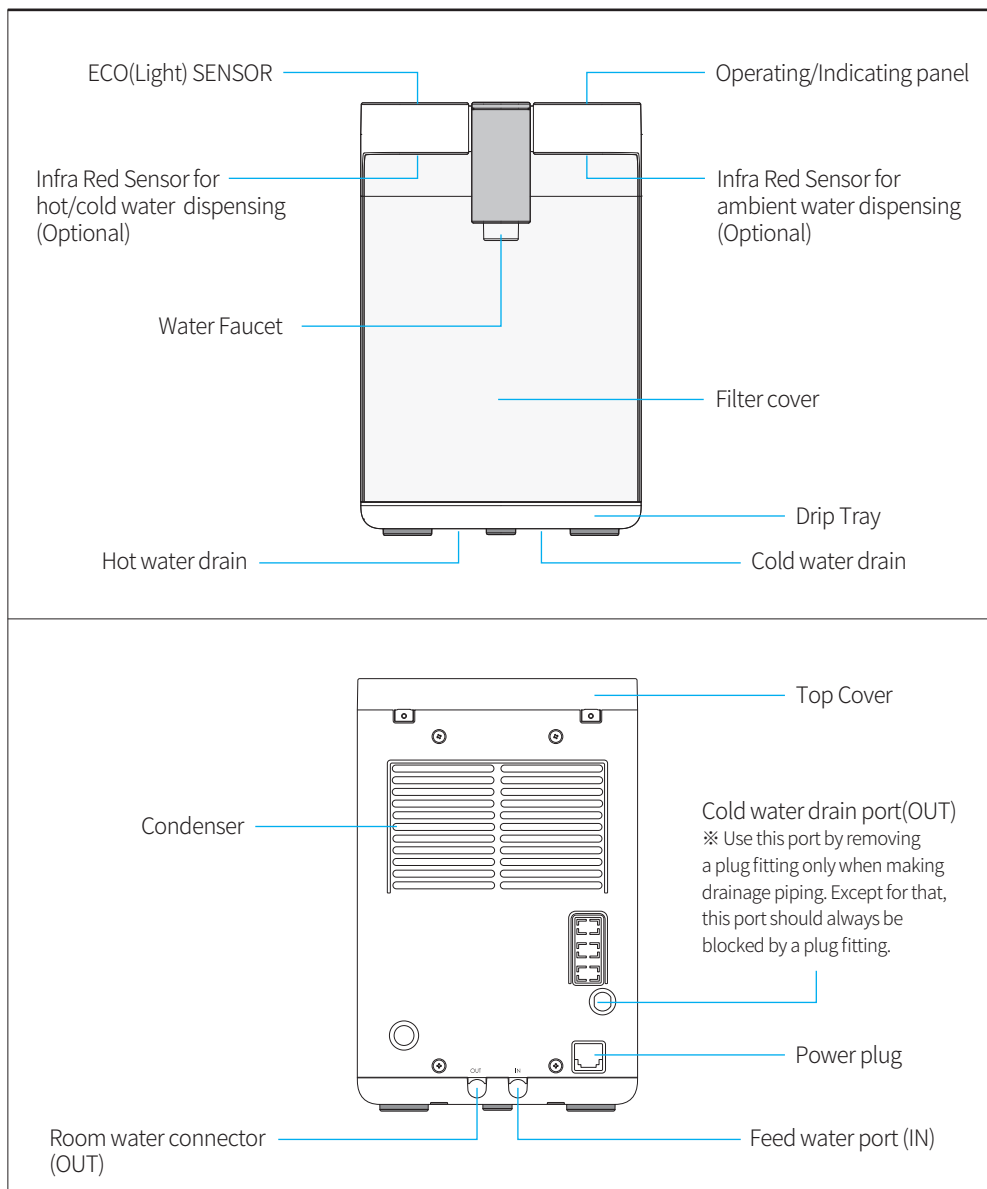
Precautions



- When you discard the unit or filter, follow the proper process of disposal. It could cause environmental pollution.
- When installing the unit, use our genuine parts. It could cause water leakage or damage to the unit.
- When replacing filter, use our genuine one. It could affect water quality.
- Do not install the unit at the place where may cause freezing trouble.
- These appliances are provided with refrigerant gas, ISOBUTANE(R600a).
- The appliance must be transported and moved, taking maximum care to ensure that it is not excessively struck or shaken. Failure to observe the above rule could put the appliance out of service.
- Keep ventilation openings, in the appliance enclosure or in the built-in structure, clear of obstruction.
- Do not damage the refrigerant circuit. Damage to the refrigerating circuit with a possible outflow of the gas can cause an explosion risk due to external sparks or flames.
- Do not run your appliance under any circumstances if it appears to be damaged.
- In case of damage, contact the Service Center and ventilate the room where the appliance is located. Avoid flames or work on the appliance.

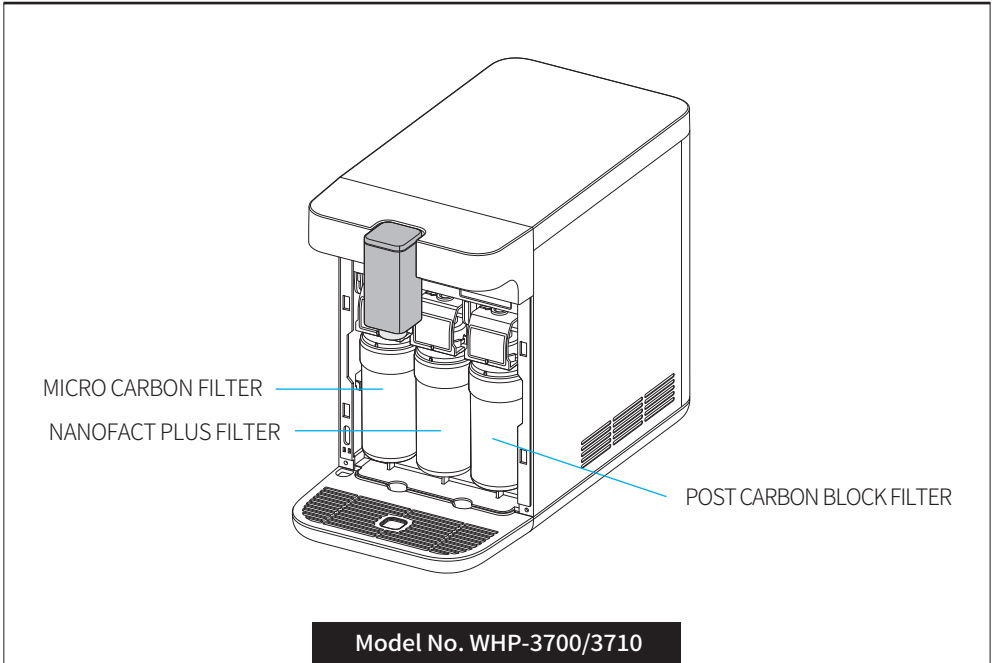
Name of each part

WHP-3700/3710



Filtration System

Filtration system

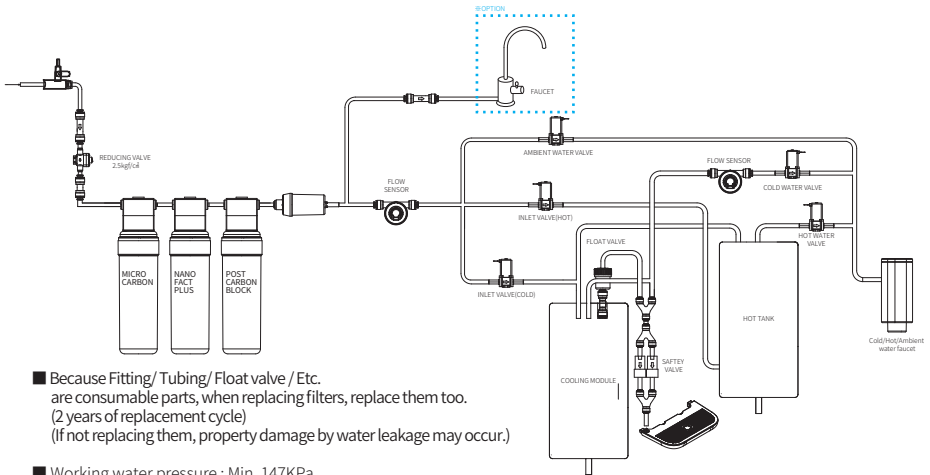


Filter replacement cycle

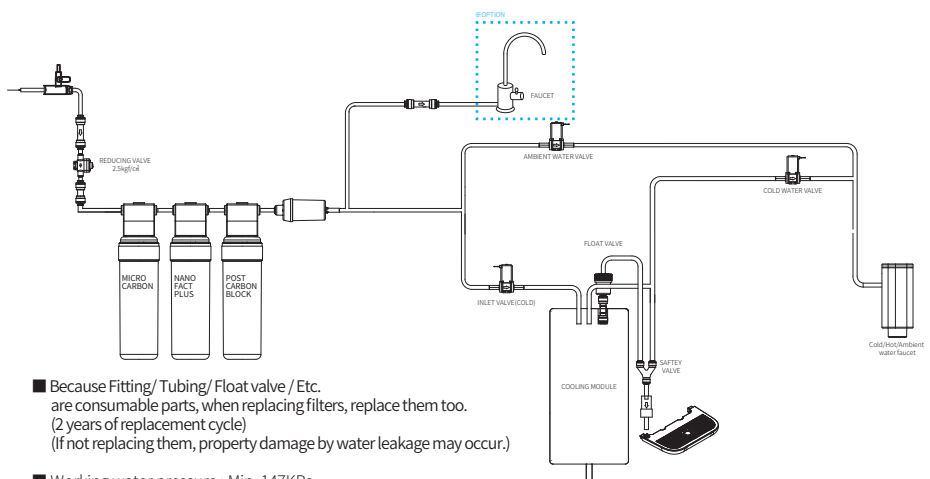
Division	1 ST STEP	2 ND STEP	3 RD STEP
Filter name	MICRO CARBON FILTER	NANOFACT PLUS FILTER	POST CARBON BLOCK FILTER
Expected Replacement	Abt. 6 months	Abt. 12 months	Abt. 12 months
Material	Activated Carbon, P.E	Cellulose, Activatd Carbon	Activated Carbon, P.E
Function	Removing sediment particles more than 5 micron in size and absorbing some of harmful organic chemicals.	Removing water contaminants more than 0.2 micron such as waterborne, bacteria and virus.	Absorbing some of harmful organic chemicals and making water tasteful.

Filtration System

Water Filtration system



Model No. WHP-3700



Model No. WHP-3710

Features

◆ Direct Cooling system

- Providing with cold water under 10 degrees through closed direct chilling module.
- No need to clean inside tank.

◆ Boost function for hot water (WHP-3700)

- It is able to get higher temperature(95°C) of hot water more than normal hot temperature(85°C) by using this function. It is useful when drinking coffee or tea.

◆ Thorough filtration system

- MICRO CARBON FILTER : Removes sediment particles such as dirt and sand more than 5 micron in size from the first stage. And absorbs some of harmful organic chemicals such as chlorine, bad taste and odor.
- NANOFACT PLUS FILTER : Removes water contaminants more than 0.2 micron such as waterborne micro-organisms, bacteria and virus by Cellulose Nano Fiber.
- POST CARBON BLOCK FILTER : Absorbs some of harmful organic chemicals such as chlorine, bad taste and odor and makes water tasteful.

◆ Power saving function

- Power saving at night by ECO(illuminance sensor) function
- The ECO sensor automatically stops water heating and chilling to save electricity
- When it detects that illuminance around the unit darkens at night.
- You can save electricity by turning off hot or cold switch when using only one sort of water.

◆ Convenient dispensing

- Volume control function(120/550/1,500ml)
- Continuous water dispensing function(1,500ml)

◆ Separable water faucet

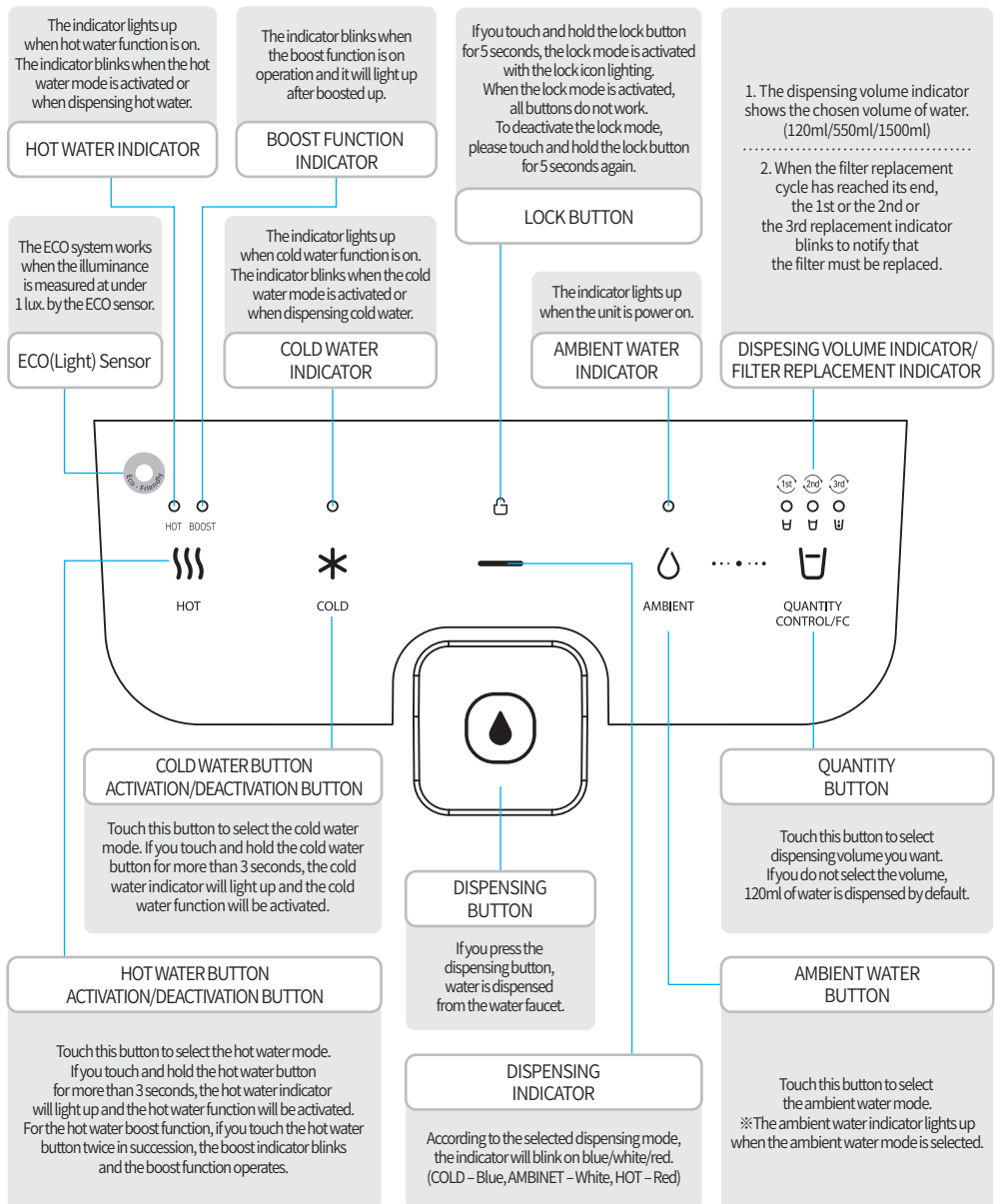
- Separable water faucet makes cleaning simple for enhanced hygiene.

◆ Slim design

- Due to its slim design, you can place the device wherever you want in your kitchen.

WHP-3700

Operation/Indication part



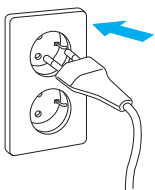
WHP-3700

How to use

※ For your safety and proper use of the product, please read and understand the following before use.

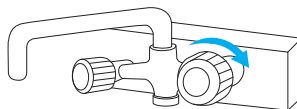
1. Plug the power cord.

※ Before plugging, please check if the voltage rate is matched.

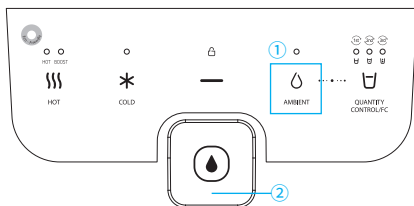


2. Open the water supply valve.

※ If water supply valve is closed, the water purifier doesn't work.
(Except in case of going outside for a long time, leave the valve open.)

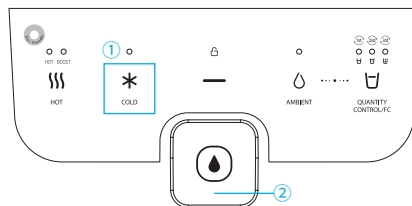


1) TO DRINK AMBIENT WATER



- ① Touch the 'AMBIENT WATER' button to select the ambient water mode. The dispensing indicator turns white.
(There is no need to select the ambient water mode, if the ambient water is set as a default.)
 - ② Press the 'DISPENSING' button to dispense ambient water. During dispensing water, the dispensing indicator blinks.
- ※ If any volume is not selected, 120ml water is dispensed with pressing the 'DISPENSING' button one time.
- ③ If you press and hold the dispensing button, the dispensing indicator blinks white and ambient water comes out up to 1500ml.

2) TO DRINK COLD WATER



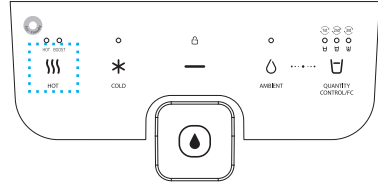
- ① Touch the 'COLD WATER' button for 3 seconds to activate the cold water function. If there is activated, the cold water indicator will light up.
- ※ In initial use of the unit, it takes about 1 hour to get sufficiently chilled water after the cold water function is activated.
- ② Touch the 'COLD WATER' button to select the cold water mode. The icon of dispensing indicator turns blue.
 - ③ Touch 'COLD WATER' button and then, press the 'DISPENSING' button within 5 seconds to dispense cold water. During dispensing cold water, the dispensing indicator blinks blue.
- ※ If any volume is not selected, 120ml water is dispensed with pressing the 'Dispensing' button one time.
- ④ The cold water comes out while holding the dispensing button up to 1500ml.
- ※ Before activating the cold water function, make sure to check whether water comes out in the cold water mode.

WHP-3700

How to use

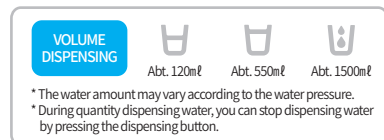
3) TO DRINK HOT WATER

- ① Touch the 'HOT WATER' button for 3 seconds to activate the hot water function. If there is activated, the hot water indicator will light up.
 ※ Before activating the hot water function, make sure to check whether water comes out in the hot water mode.
- ② Touch the 'HOT WATER' button to select the hot water mode. The icon of dispensing indicator turns red.
- ③ Touch 'HOT WATER' button and then, press the 'DISPENSING BUTTON' within 5 seconds to dispense hot water. During dispensing hot water, the dispensing indicator blinks red.
 ※ If any volume is not selected, 120ml water is dispensed with pressing the 'Dispensing' button one time.
 ※ Take caution when dispensing hot water to avoid scalding.



4) TO SET QUANTITY OF DISPENSING AMBIENT/COLD/HOT WATER

After selecting the water temperature (AMBIENT/COLD/HOT), touch the 'QUANTITY CONTROL' button to set the desired volume water.
 If any volume is not selected, 120ml water is dispensed.



5) TO OPERATE THE BOOST FUNCTION

What is the boost function?

Extra heating device, booster heats up the water to 95°C within 1 minute. you can get higher temperature(95°C) of hot water more than normal hot temperature(85°C) by using this function.

- ① Touch the boost button two times continuously. Then the extra heating device is operated with blinking the boost indicator and 'beep' sound. Once the temperature of hot water reaches 95°C, the process of the boost function is finished automatically and the boost indicator lights up.
 * It takes about 1 minute for the process of the boost function to be finished when initial temperature of hot water is 70°C.
 * Process time may vary depending on initial hot water temperature.
 * The boost function ends after one time operation, and it needs to re-operate the boost function when it is required.
 * While operating boost function, if you touch the boost button 2 times, the boost function stops.
- ② If you touch the hot water button after finishing the boosting operation, you can get higher temperature(95°C) of hot water more than normal hot temperature(85°C).
 ※ Take caution when dispensing hot water to avoid scalding.



WHP-3700

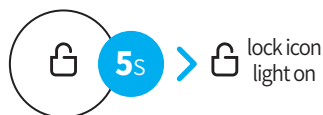
How to use

6) ADDITIONAL FUNCTION

① Button-lock mode

Button-lock mode is for protecting children from any problem by careless use. When the lock mode is activated, all buttons do not work.

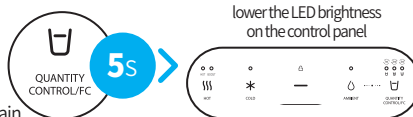
- ▶ To activate the lock mode, touch and hold the lock button for 5 seconds.
- To deactivate the lock mode, touch and hold the lock button for 5 seconds again.
- ▶ When the lock mode is activated, the lock icon will light on with a 'beep' sound.



② ECO mode

ECO function helps save power consumption by sensing illuminance around the unit. When the illuminance around the unit darkens at night, the product automatically stops water heating & chilling and adjusts the brightness of display sensor built-in.

- ▶ To activate the ECO mode
Touch and hold the volume button for more than 5 seconds. Then, it will be activated after the dispensing indicator blinks on blue 3 times with a beep sound as 2 times.
- ▶ To deactivate the ECO mode
Touch and hold the volume button for more than 5 seconds again. Then, it will be deactivated after the dispensing indicator blinks on white 3 times with a beep sound.

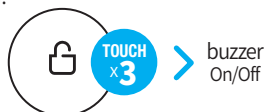


※ Regardless of the eco mode, if the light intensity sensor detect the darkness of surrounding, it will automatically lower the LED brightness on the control panel for the prevention of dazzling.

③ Buzzer ON/OFF function

By touching the lock button, it is able to turn on or off the buzzer. Touch the lock button 3 times continuously to turn buzzer off, and if you touch the lock button 3 times continuously again, the buzzer will turn on.

(※ The buzzer is on as default setting.)



④ To change default setting of dispensing water

It is possible to set a frequently used water as the default mode for more convenient use. When touching 'AMBIENT' button for 5 seconds, it can change default setting of dispensing water.

- ▶ To set the cold water as default
Touch the 'AMBIENT' button for more than 5 seconds. Then, the cold button blinks 2 times with a 'beep sound' as 2 times, and cold water is set as default.

- ▶ To set the ambient water as default

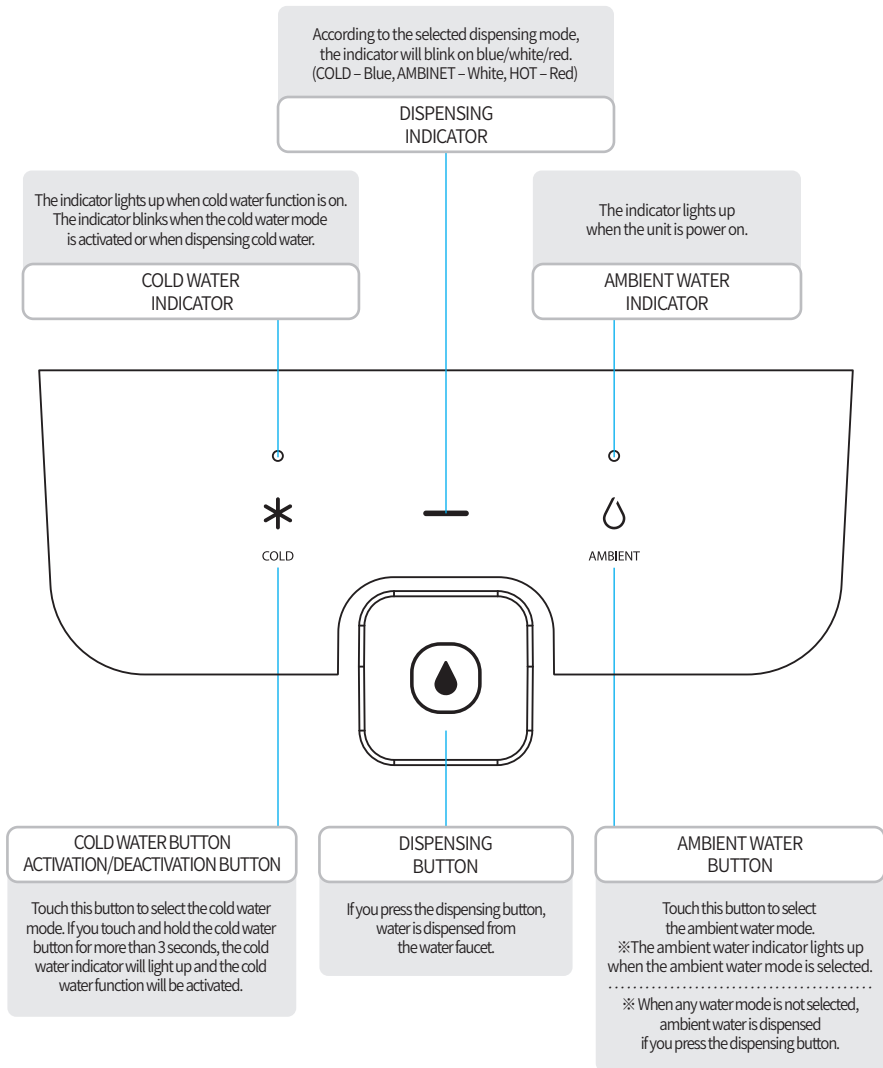
Touch the 'AMBIENT' button for more than 5 seconds.

Then, the ambient button blinks 2 times with a 'beep sound' as 2 times, and ambient water is set as default.



WHP-3710

Operation/Indication part



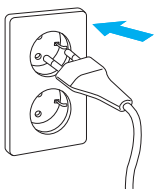
WHP-3710

How to use

※ For your safety and proper use of the product, please read and understand the following before use.

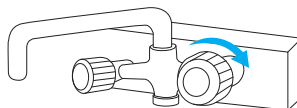
1. Plug the power cord.

※ Before plugging, please check if the voltage rate is matched.

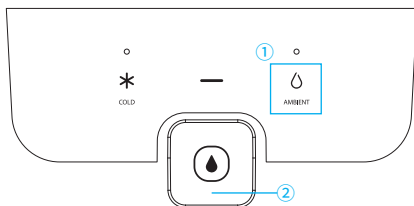


2. Open the water supply valve.

※ If water supply valve is closed, the water purifier doesn't work.
(Except in case of going outside for a long time, leave the valve open.)

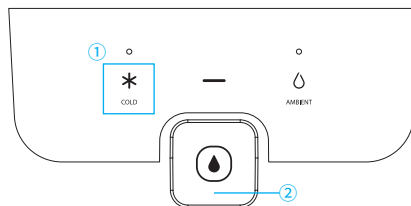


1) TO DRINK AMBIENT WATER



- ① Touch the 'AMBIENT WATER' button to select the ambient water mode. The dispensing indicator turns white. (There is no need to select the ambient water mode, if the ambient water is set as a default.)
- ② Press the 'DISPENSING' button to dispense ambient water. During dispensing water, the dispensing indicator blinks.
※ If any volume is not selected, 120ml water is dispensed with pressing the 'Dispensing' button one time.
- ③ If you press and hold the dispensing button, the dispensing indicator blinks white and ambient water comes out up to 1500ml.

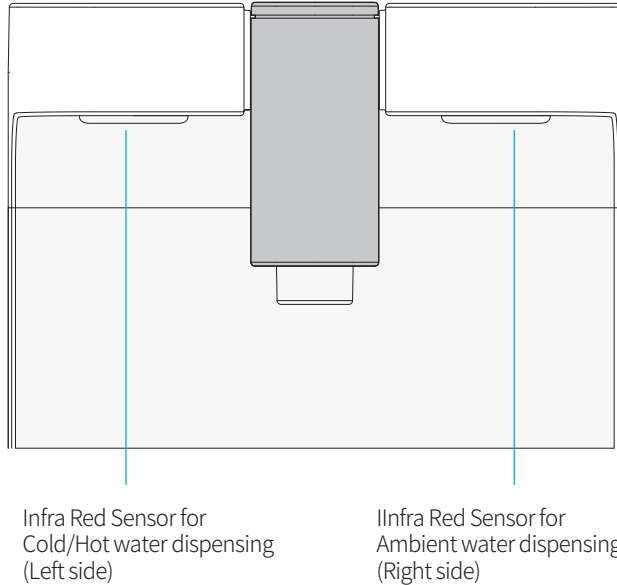
2) TO DRINK COLD WATER



- ① Touch the 'COLD WATER' button for 3 seconds to activate the cold water function. Then, cold water indicator will light up.
※ In initial use of the unit, it takes about 1 hour to get sufficiently chilled water after the cold water function is activated.
- ② Touch the 'COLD WATER' button to select the cold water mode. The icon of dispensing indicator turns blue.
- ③ Touch 'COLD' button and then, press the 'DISPENSING' button within 5 seconds to dispense cold water. During dispensing cold water, the dispensing indicator blinks blue.
※ If any volume is not selected, 120ml water is dispensed with pressing the 'Dispensing' button one time.
- ④ The cold water comes out while holding the dispensing button up to 1500ml.
※ Before activating the cold water function, make sure to check whether water comes out in the cold water mode.

Contactless(Optional) How to use

※ An infra red sensor(Optional) activates dispensing when you place your hand approximately 4cm over the sensor.



1) TO DRINK COLD WATER BY CONTACTLESS SENSOR

- ① Place your hand over the Left Sensor 4cm or less to dispense cold water.

2) TO DRINK HOT WATER BY CONTACTLESS SENSOR

- ① Touch the "HOT WATER" button and then place your hand over the Left Sensor 4cm or less to dispense hot water.

3) TO DRINK AMBIENT WATER BY CONTACTLESS SENSOR

- ① Place your hand over the Right Sensor 4cm or less to dispense ambient water

※ Continuous water dispensing by the sensor is possible for up to 10 seconds.

Filter Replacement

1. Filter replacement cycle

The filter needs to be replaced regularly.
If not, the product's water quality may be degraded.

2. Alarm for filter replacement (For WHP-3700)

When the filter replacement cycle has reached its end, the 1st or 2nd or 3rd replacement indicator blinks to notify that the filter must be replaced. The filter should be replaced when either of below conditions are reached first.



Filter Name		Recommended Replacement cycle
1 ST STEP	MICRO CARBON FILTER	2400ℓ or 6 months
2 ND STEP	NANOFACT PLUS FILTER	4800ℓ or 12 months
3 RD STEP	POST CARBON BLOCK FILTER	4800ℓ or 12 months

3. How to replace the filter

<p>1. Before replacing filters, close the water supply valve.</p> <p>2. Remove the pressure and remaining water in the filter and pipe by taking out ambient water. ※ A lot of water could spill out unless the pressure is removed.</p> <p>3. Unplug the power cord.</p>		<p>4. Pull the drip tray forward to remove it.</p>	<p>5. Remove the filter cover by pulling it down.</p>
<p>6. Lift up the filter slightly first, then take out the filter by turning it counterclockwise.</p>	<p>7. Remove the protection cap of the new filter and insert the new filter into filter connector by turning it clockwise.</p> <p>※ Be sure to Insert the filter by referring water filtration process and keep the filtration order.</p>	<p>8. Open the water supply valve and connect power cord. And drain out water more than 10 ℓ in the ambient water mode to clean the filters.</p>	

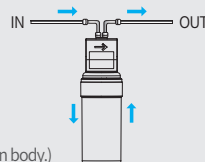
Filter Replacement

During initial installation or replacement of filters, please use the product after doing 'Water Flushing' at least 10 ℓ until white black or bubble water doesn't come out from the filters.

(Water Flushing : the progress that allows water to flow for cleaning alien substance, dust, etc. in the initial use of filters.)

Black carbon dust ack powder may come out after initial installation or replacement of filters.

(It is just the fine powder of activated carbon that improves the taste of water and has no effect on the human body.)



4. How to Reset the Filter Replacement Cycle : Filter Reset Mode(For WHP-3700)

- ① Touch the 'AMBIENT' button and the 'QUANTITY CONTROL' button at the same time for 3 seconds to enter the filter reset mode on.
- ② Then, 'LOCK' button blinks and 'HOT','COLD','AMBIENT' buttons light on.
- ③ When touching HOT or Cold or Ambient button for 3 seconds to reset the filter replacement cycle, one of the intended filter in the below table will be reset.

Filter Name		BUTTON FOR RESET
1 ST FILTER	MICRO CARBON FILTER	HOT
2 ND FILTER	NANOFACT FILTER	COLD
3 RD FILTER	POST CARBON BLOCK FILTER	AMBIENT

- ④ The applicable 1st or 2nd or 3rd replacement indicator blinks and rings three times when the setting is completed.
- ⑤ The filter reset mode off when touching the 'AMBIENT' button and the 'QUANTITY COTROL' button for 3 seconds again.

Cautions

- According to the filter replacement cycle, replace filters regularly.
- If filters are not regularly replaced, it could degrade the water quality.
- The filter replacement cycle may vary depending on feed water quality and consumption.
- When replacing filters, use our genuine one.
(If not, we can not guarantee filter efficiency and water quality.)
- When replacing filters, be sure to do flushing process to new filters for more than 10ℓ.
(If not, it could degrade water quality.)
- Even if your water consumption is not much, following regular filter replacement cycle is recommended.

Solution to common problems

※ Check the followings before asking A/S.

Problem	Cause	Possible Solution
Insufficiently chilled water	Low power supply	Check voltage rate.
	Deactivation of Cold water mode	Check if the cold water indicator is on.
No water comes out	Filter change required	Check filter replacement cycle and replace filter if reached its end.
	Water supply shut off	Unplug the power cord. When the water is supplied, use the unit again.
	Tubing blockage	Check the tubing to make sure that it is not bent or kinked to prevent water flow. If there is a bending in connecting hose, straighten the part.
Low Water Production		The amount of water may vary according to water pressure. ※ Standard Water Pressure : 245 kPa
Noise during operation	Working sound of compressor	When the compressor works or stops, there may be noise like water flowing. This noise comes from refrigerant flowing and it is not a problem.
	Boiling Noise	While operating the heater, there may be boiling noise and it is not a problem.

Solution to common problems

※ Check the followings before asking A/S.

Problem	Cause	Possible Solution
Decreased water production	Filter change required	Check that the filter replacement cycle has reached its end.
	Deactivation of Cold water mode	If low pressure water is supplied to the unit, less amount of filtered water is produced.
Water leakage	Poor Connection to Water Supply	Shut off Water Supply Valve and contact local customer service center immediately.
Unpleasant water taste or odors	No use over 3 days	The amount of water may vary according to water pressure. ※ Standard Water Pressure : 245 kPa
	Poor usage environment	Replace all the filters and connecting hoses.
Particle in the purified water	Bubbles when dispensing water	After 10 minutes, if the particle still remains, contact customer service center.

Solution to common problems

※ Check the followings before asking A/S.

Problem	Cause	Possible Solution
Hot water doesn't come out.	Checking the hot water indicator	Check if the hot water indicator lights on. If not, activate the hot water mode first.
	Malfunction of the thermostat or the heater	Power off the unit and contact customer service center. (If there is overheating in the hot device, the manual thermostat cuts off electricity for safety.)
Hot water cut-off during operation	Filter replacement period expired or a level of water flow is low.	Check the filter replacement cycle and contact customer service center.
	Simultaneous use with cooking water (If connected with the extra faucet)	Water dispensing volume may decrease while cooking water is in use simultaneously. Stop using cooking water when using the unit.

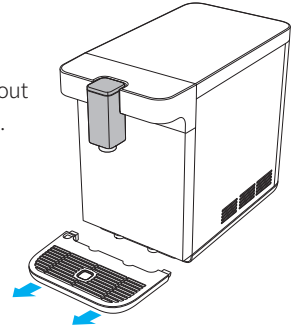
※ If a problem comes up, contact a customer service center and get filter replacement or repair service.

※ We can not take responsibility for any damage due to the filter replacement by third party who is not our service man.

Cleaning Method

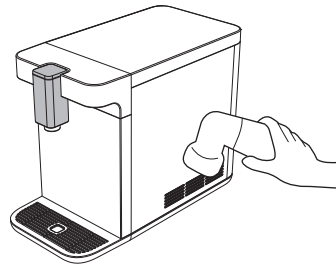
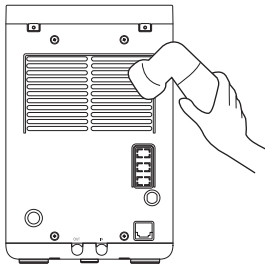
1. Cleaning the drip tray

- ① Please empty out water of the drip tray once a week.
 ※ By forming ice inside the cold tank, small volume of water comes out and drains into the drip tray. This is normal and not a malfunction.
- ② Detach the drip tray by pulling out it and wash it with a pH-neutral detergent.



2. Cleaning the air vent

- Remove dirt and dust from the air vent by using a vacuum cleaner once a month.
- ※ If the air vent is blocked with dust, it will affect cooling system negatively.



Cleaning	Cycle	Method
Exterior	Once a week	Clean the exterior with water-soaked, soft cloth. (Never use Benzene, gasoline or thinner to clean the unit.)
Drip tray	Frequently	Frequently clean the drip tray with a neutral detergent.
Fitting/ Tubing	More than once within 2years	Change the fitting and tubing once every two years when you replace filters.
Water faucet	Daily	Detach the water faucet by turning it counterclockwise and wash in running water. When you attach the water faucet again, fix it firmly, otherwise water can be leaked.

Specifications

Product Name	RUHENS HOT&COLD WATER PURIFIER	RUHENS COLD WATER PURIFIER
Model No.	WHP-3700	WHP-3710
Power Supply	220V-240V / 50Hz	
External dimensions	240 (W) x 488 (D) x 373 (H) mm	
Weight	15kg	13kg
Recommended water consumption	10ℓ / a day (4 people based)	
Cold water capacity	About 0.9ℓ	
Cold water temperature	About 4°C~12°C	
Motor power consumption	0.45A	
Heater power consumption	920W - 1100W	-
Hot water capacity	About 1.2ℓ	-
Hot water temperature	About 80°C~90°C (Boosting : ~95°C)	-
Service condition	Working pressure : 127 ~ 490kpa	
	Working temperature : 5~35°C	
	Usable feed water : Tap water	

Filteration Sytem (Filter component)

Model No.		WHP-3700	WHP-3710
Filteration system	MICRO CARBON FILTER (CARBON BLOCK)	○	○
	NANOFACT PLUS FILTER (Cellulose, Activated Carbon)	○	○
	POST CARBON BLOCK FILTER (CARBON BLOCK)	○	○

※ Exterior and specification of the product could be changed for performance improvement.

※ Filter replacement cycle could be changed depending on water consumption.

Warranty card

PRODUCT WARRANTY

Product	Model	<input type="checkbox"/> WHP-3700 <input type="checkbox"/> WHP-3710
	Date of Manufacture	
Date of Purchase	Year	Month Day
Customer's Name		
Dealer's Name		

WARRANTY GUIDE

1. The warranty period is 12 months from date of purchase.
 2. In following case, the product will be repaired at cost.
 - a) After expiry of free warranty period.
 - b) Malfunction of caused by careless or abnormal use.
 - c) Malfunction of caused by natural disaster.
 - d) In case this manual has been lost.
-

MEMO