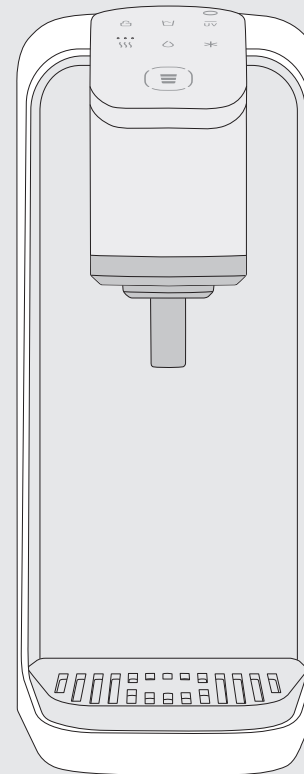


# HOT&COLD WATER PURIFIER OPERATION MANUAL

WHP-3000/3010



## ◆ FOR YOUR SAFETY

- Precautions ..... 2~6

## ◆ FOR INFORMATION

- Name of each part ..... 7
- Filtration system ..... 8~9
- Features ..... 10
- WHP-3000 Operation/Indication part .... 11
- WHP-3000 How to use ..... 12~16
- WHP-3010 Operation/Indication part .... 17
- WHP-3010 How to use ..... 18~21
- Filter replacement ..... 22~23
- Solution to common problems ..... 24~26
- Cleaning method ..... 27
- Specifications ..... 28
- Warranty Card ..... 29

We cannot take any responsibility for  
any damage caused by not using  
our genuine filter or part.

# PRECAUTIONS

Please read carefully following precautions to avoid unpredictable dangers and damages.

Depending on the degree of danger and damage that could occur by improper use, precautions are divided into 3 types as below.

**! Danger** : If not observed, serious injury or even death could occur.

**! Warning** : If not observed, serious injury or property damage could occur.

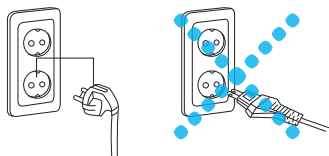
**! Caution** : If not observed, Slight injury or property damage could occur.

**!** This mark is for calling attention to dangers caused by improper use. Please read carefully and follow the precautions.

## Precautions for power supply

**! Danger** This product must be plugged into AC220V outlet.

※ It could cause a fire or electric shock.



**! Danger** Before use, please wipe dust of other foreign substances off on the plug.

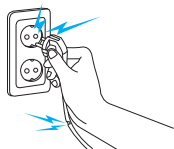
※ It could cause a fire or electric shock.



**! Danger** Please do not use when the plug is damaged or swinging.

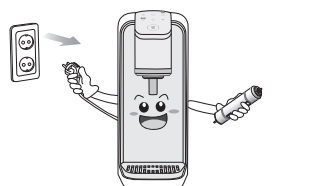
※ It could cause a fire or electric shock & leakage.

※ If the power cord is damaged, it must be replaced by the manufacturer, its service agent or similarly qualified persons in order to avoid a hazard.



**! Danger** Before replacing filter, please unplug the power cord.

※ It could cause electric shock.



# PRECAUTIONS

## Precautions for power supply

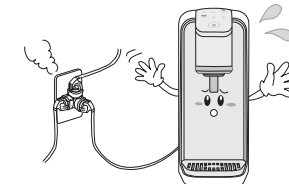
**! Danger** Please do not try to bend, tie or pull the power cord.

※ It could cause a fire by electric shock.



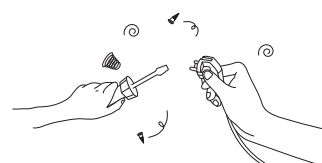
**! Danger** The outlet should be rated for more than 16A. Use a separate outlet for the unit.

※ Do not plug too many cords into the outlet. It could cause a fire.



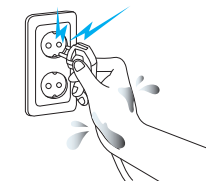
**! Danger** Please do not disassemble or modify the plug.

※ It could cause a fire or electric shock.



**! Danger** Please do not plug in or unplug the power cord with wet hands.

※ It could cause electric shock.



## Precautions for installation

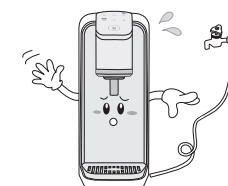
**! Danger** Please do not install the unit at a moist place like bathroom, shower room or outdoor.

※ It could cause a fire or electric shock.



**! Danger** Do not let the inlet hose be twisted or bended.

※ It could cause water and electric leakage.



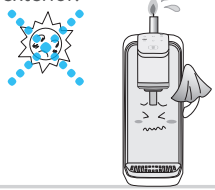
# PRECAUTIONS

## Precautions for installation



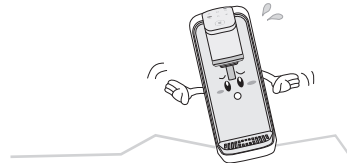
Avoid heat and direct sunlight.

※ It could cause deformation of the exterior.



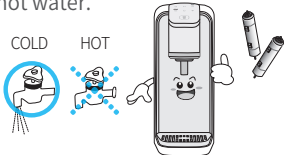
Place the unit on a level surface and hard floor.

※ It could cause malfunction.



Connect the unit only to the cold water pipe.

※ It is harmful for filters to connect to hot water.

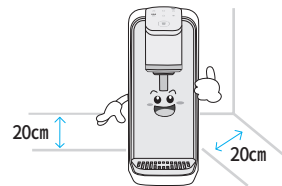


※ The new hose-sets enclosed with the water purifier should be used instead of an old hose-sets.



Maintain a sufficient distance from the wall for ventilation. At least 20cm is recommended.

※ It could cause malfunction.

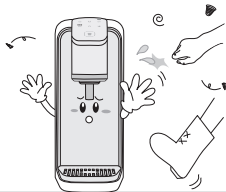


## Precautions for use



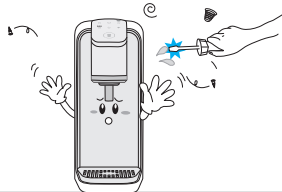
Do not apply severe impacts to the unit.

※ It could cause malfunction, damage or electric shock.



Do not attempt to repair, disassemble or transform.

※ It could cause a fire or electric shock.



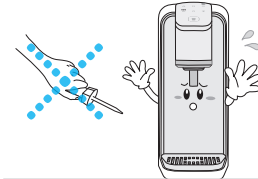
# PRECAUTIONS

## Precautions for use



Do not insert sharp wire or screwdriver into the unit.

※ It could cause malfunction or electric shock.



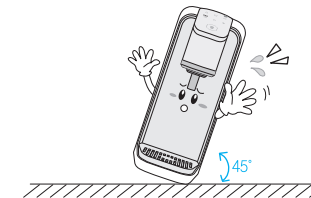
Be careful not to get burned by hot water.

※ It could cause scald.



Do not tilt the unit more than 45°C while moving it.

※ It could cause malfunction.



Do not move the unit while it is being operated.

※ It could cause malfunction.

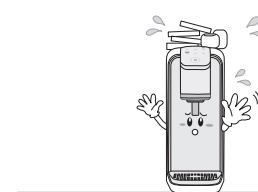


## Precautions for installation



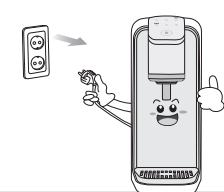
Do not put heavy stuff on the unit.

※ It could cause damage to the unit.



When water supply is cut off, unplug the power cord.

※ It could cause malfunction.

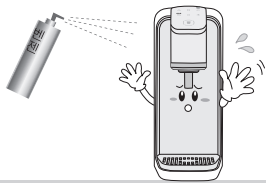


# PRECAUTIONS

## Precautions for use

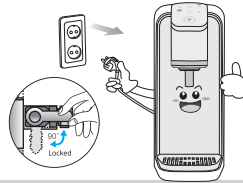
**Caution** Never use Benzene or gasoline to clean the unit.

※ It could cause discolor, peeling and damage of the unit.



**Danger** Close the main water supply valve and unplug the power cord when not using the unit for a long time. Before use it again, drain more than 3 liters of hot and cold water.

※ It could cause a fire or water leakage.



※ This appliance is not intended for use by persons (including children) with reduced physical, sensory or mental capabilities, or lack of experience and knowledge, unless they have been given supervision or instruction concerning use of the appliance by a person responsible for their safety.

※ Children should be supervised to ensure that they do not play with the appliance.

**Caution** When you discard the unit or filter, follow the proper process of disposal.

※ It could cause environmental pollution.

**Caution** When installing the unit, use our genuine parts.

※ It could cause water leakage or damage to the unit.

**Caution** When replacing filter, use our genuine one.

※ It could affect water quality.

**Caution** Do not install the unit at the place where may cause freezing trouble.

※ This appliance is intended to be used in household and similar applications such as

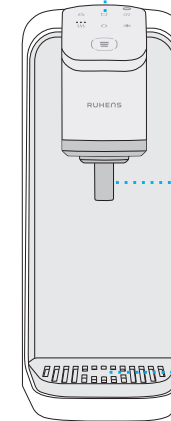
- \* staff kitchen areas in shops, offices and other working environments;
- \* farm houses and by clients in hotels, motels and other residential type environments;
- \* bed and breakfast type environments;
- \* catering and similar non-retail applications.

**Warning** This appliance contains a UV emitter. Do not stare at the light source.

# Name of each part

## Model No. WHP-3000/3010

Operating/Indicating Panel

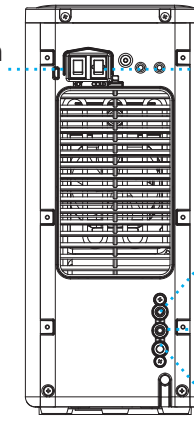


<Front>

HOT Switch  
ECO Switch

Water Faucet

Drip Tray



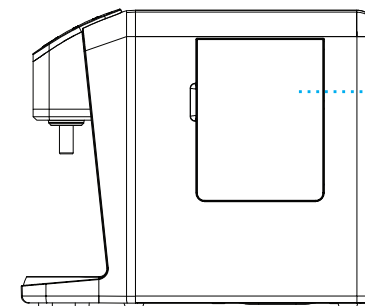
<Back>

Cold Switch

Room Water connector

Cold Water Drain(OUT) Port

Feed Water(IN) Port



<Side>

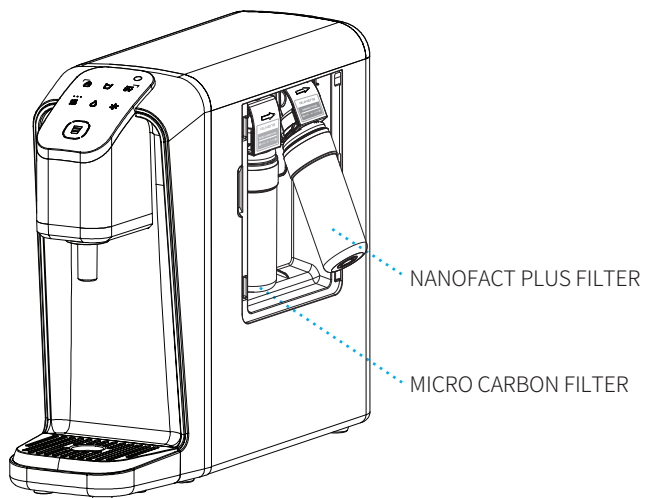
Filter Cover

Power Plug



# Filtration system

## Filtration system



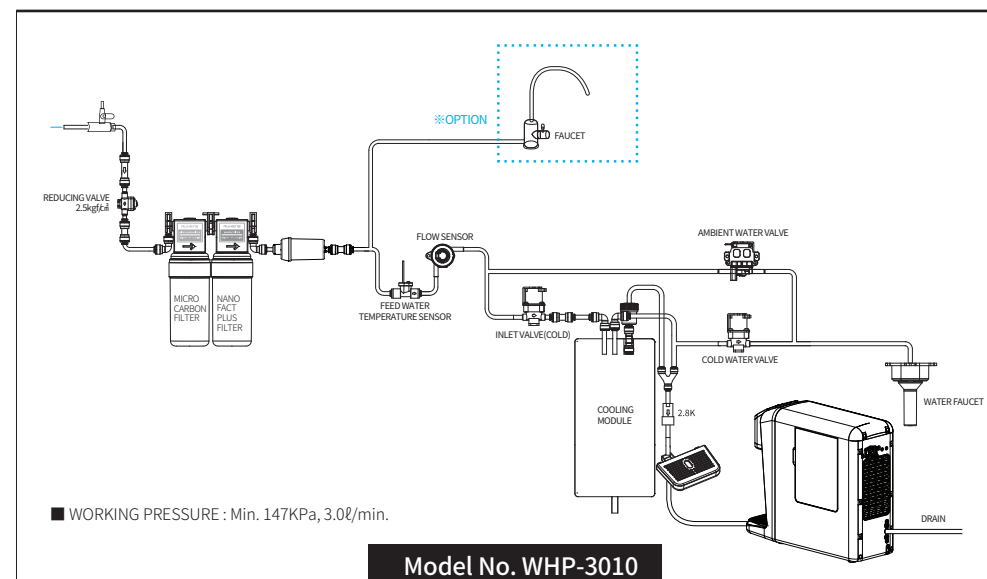
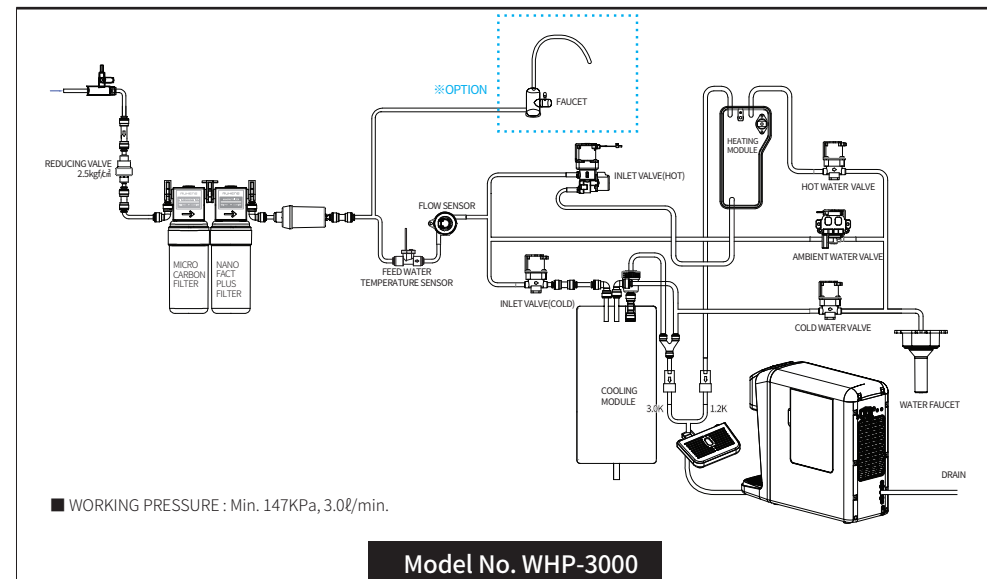
Model No. WHP-3000/3010

## Filter replacement cycle

구분	1ST STEP	2ND STEP
Filter name	MICRO CARBON FILTER	NANOFACT PLUS FILTER
Expected Replacement	6 Months	12 Months
Material	Compressed carbon	Cellulose, Compressed carbon
Function	Removing sediment particles more than 5μm in size and absorbing some of harmful organic chemicals	Removing water contaminants more than 0.25μm such as waterborne, bacteria and virus

# Filtration system

## Water filtration process



## Features

### ◆ Direct cooling system

Due to the closed direct chilling module, there is no need clean inside tank.



### ◆ Instant heating system (WHP-3000)

- Super saver of electricity (The instant heater is only activated when dispensing hot water.)
- Convenient for selecting temperature of hot water(40°C / 70°C / 80°C)

### ◆ Self UV LED sterilization system

- Sterilizing water in the faucet for 10 minutes every 1 hour by using UV LED for ensuring the cleanness of faucet

### ◆ Thorough filtration system

- MICRO CARBON FILTER : Removes sediment particles such as dirt and sand more than 5 micron form the first stage and absorbs some of harmful organic chemicals such as chlorine, bad taste and order.
- NANO FACT FILTER : Removes water contaminants more than 0.2 micron such as waterborne micro-organisms, bacteria and virus by Cellulose Nano Fiber.

### ◆ Power saving function

- Power saving at night by ECO(illuminance sensor) function
- The ECO sensor automatically stops water heating and chilling to save electricity when it notices that illuminance around the unit darkens at night.
- You can save electricity by turning off hot or cold switch when using only one sort of water.

### ◆ Convenient dispensing

- Volume control function(120/550/1,500ml)
- Continuous water dispensing function(1,500ml)

### ◆ Separable water faucet

- Separable water faucet makes cleaning simple for enhanced hygiene.

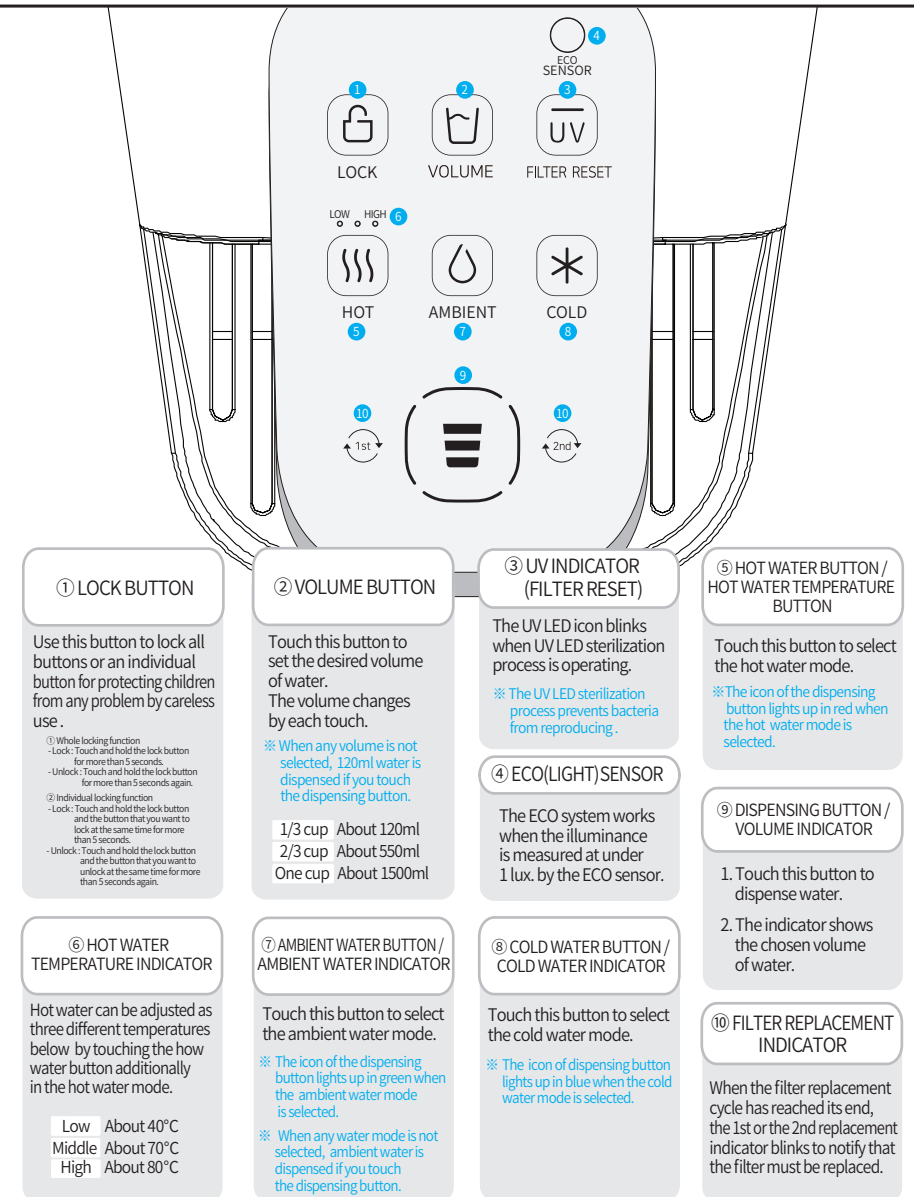
### ◆ Slim design

- Due to its 18cm wide ultra slim design, you can place the device wherever you desire in your kitchen.

### ◆ The alarm for filter replacement

- When the filter replacement cycle has reached its end, the 1st or the 2nd replacement indicator blinks to notify that the filter must be replaced.

## WHP-3000 Operation / Indication part

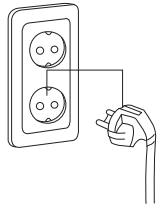


# WHP-3000 How to use

※ For your safety and proper use of the product, please read and understand the following before use.

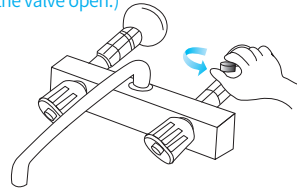
## 1. Plug the power cord.

※ Before plugging, please check if the voltage rate is matched.

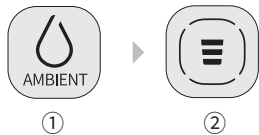


## 2. Open the water supply valve.

※ If water supply valve is closed, the water purifier doesn't work.  
(Except in case of going outside for a long time, leave the valve open.)



### 1) TO DRINK AMBIENT WATER

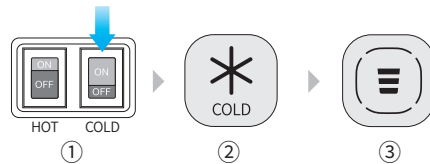


① Touch the 'AMBIENT' button to select the ambient water mode. The icon of dispensing button turns green.

② Touch the 'DISPENSING' button to dispense ambient water. During dispensing water, the circle line LED blinks.

※ If any volume is not selected, 120ml water is dispensed with touching the 'Dispensing' button one time.  
During dispensing water, you can stop dispensing water by touching the 'Dispensing' button.

### 2) TO DRINK COLD WATER



① Turn on the cold switch at the back of the unit to activate the cold water function. The cold water icon lights up.

※ In initial use of the product, it takes about 1 hour to get sufficiently chilled water after the cold water function is operated.

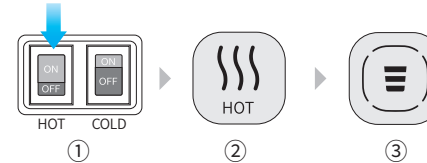
② Touch the cold water button to select the cold water mode. The icon of dispensing button turns blue.

③ Touch the 'DISPENSING' button to dispense cold water. During dispensing water, the circle line LED blinks.

※ Before activation the cold water function, make sure to check whether water comes out in the cold water mode.

# WHP-3000 How to use

## 3-1 TO DRINK HOT WATER



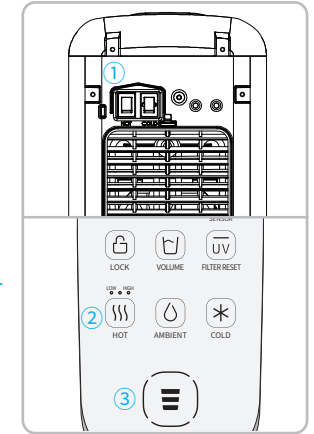
① Turn on the hot switch at the back of the unit to activate the hot water function. The hot water icon lights up.

※ In initial use of the product, the water function is locked to avoid product damage or malfunction.  
To activate hot water function, dispense more than 550ml water in the hot water mode after turning on the hot switch.  
(At this moment, 2/3 cup volume indicator lights up.)

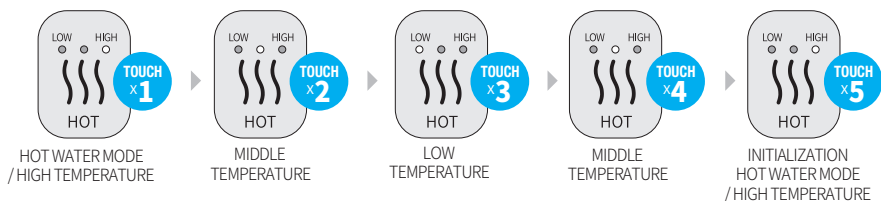
② Touch the hot button to select the hot water mode. 1/3 cup volume indicator lights up in red.

③ Touch the dispensing button. Then, hot water comes with flickering the circle line LED after pre-heating.

※ Because this product heats water by the instant heating system, it takes a while to dispense hot water. (the maximum waiting time is 10 seconds.)  
When pre-heating, three pieces of the circle line LED light up in sequential order and when all three the circle line LEDs light up, hot water comes out with flickering the circle line LED and 'Beep' sound.



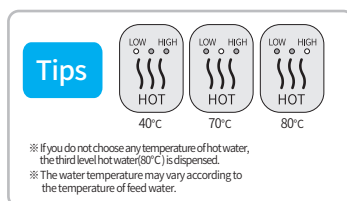
## 3-2) TO SET TEMPERATURE OF HOT WATER



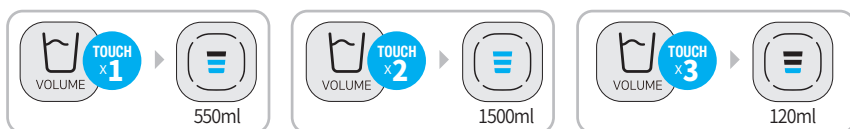
① Touch the hot button to select the hot water mode.

② Repeated touching of the hot button in the hot water mode changes the temperature of hot water, 50°C step at a time, to the next temperature in sequence (50°C -> 70°C -> 80°C -> 50°C ...).

※ If you do not touch the dispensing button within 5 seconds after selecting the hot water mode, the dispensing mode will turn into the default mode which is set.



## 4) FOR PRESET VOLUME DISPENSING



### ① HOW TO SET THE DESIRED QUANTITY OF WATER

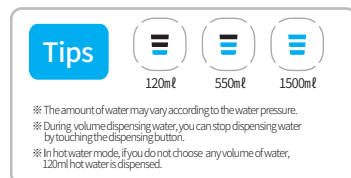
Touch the volume button to set the desired volume water and touch the dispensing button.

※ one bar(120ml) is set by default.

(If you do not choose any volume of water, 120ml water is dispensed.)

### ② HOW TO DISPENSE BY FREE CHOICE

Touch and hold the dispensing button to dispense water. During holding the the dispensing button, water comes out. when you lift your finger, it stops dispensing water. (Except hot water)



## 5) ADDITIONAL FUNCTION

### ① Eco mode

It helps to save an electricity consumption with a machine that intelligently turn off the cooling mode by detecting darkness such as night through the light sensor built-in.

#### ▶ To activate the eco mode

Touch and hold the volume button for more than 4 seconds.

Then, it will be activated after the blue dispensing LED light flickers on and off 3 times with a ding-dong sound.



#### ▶ To deactivate the eco mode

Touch and hold the volume button for more than 4 seconds.

Then, it will be lift after the white dispensing LED light flickers on and off 3 times with a ding-dong sound.



※ Regardless of the eco mode, if the light intensity sensor detect the darkness of surrounding, it will automatically lower the LED brightness on the control panel for the prevention of dazzling.

### ② Button-lock mode

Button- lock mode is for protecting children from any problem by careless use.

#### ▶ Locking all buttons

- Button-lock mode is set with a illumination of lock icon when the lock icon is touched for more than 5 seconds.

-It unlocks the buttons by turning off the LEDs when the lock icon is touched for more than 5 seconds again.

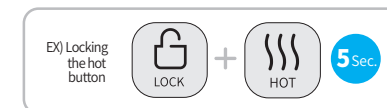
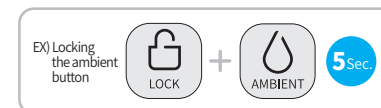
- It is useful when cleaning of the control panel.



#### Locking individual button

▶ - The only selected button will be locked when the buttons(hot/ambient/cold) to be locked and the lock icon are touched together for more than 5 seconds.

- It unlocks when the selected button locked and the lock icon are touched together for more than 5 seconds.



※ If you touch the button locked in a button-lock mode, that button will blink with a buzzer sound.

※ If you lock all buttons in an individual button-lock mode, the machine locks all buttons.

If you unlock all buttons again, then it turn into the individual button-lock mode.

※ Setting will be initialized after pull out the plug and pull in.

## ③ Buzzer ON/OFF function

- To turn buzzer on  
Touch the lock button and the quantity button at the same time for more than 4 seconds.



Then, the buzzer will be turned on after blinking the LED at the upper right corner of the dispensing button 3 times with 'ring' sound.

- To turn buzzer off  
Touch the lock button and the quantity button at the same time for more than 4 seconds.



Then, the buzzer will be turned off after blinking the LED at the lower corner of the dispensing button 3 times with 'ring' sound.

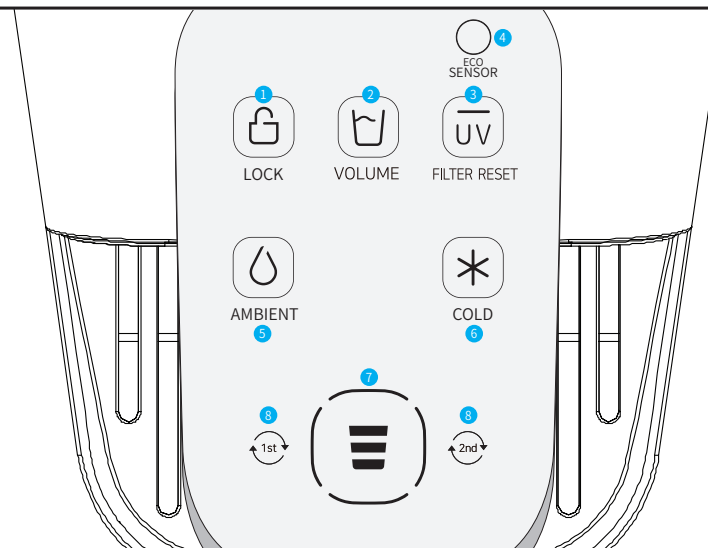
## ④ To change default setting of dispensing water

- It is possible to set a frequently used water as the default mode for more convenient use.

- Touch the 'AMBIENT' button more than 5 seconds.  
Then, the icon of dispensing button turns green and ambient water is set as default.



- Touch the 'COLD' button more than 5 seconds.  
Then, the icon of dispensing button turns blue and cold water is set as default.



### ① LOCK BUTTON

Use this button to lock all buttons or an individual button for protecting children from any problem by careless use.

- ① Whole locking function  
- Lock: Touch and hold the lock button for more than 5 seconds.  
- Unlock: Touch and hold the lock button for more than 5 seconds again.  
② Individual locking function  
- Lock: Touch and hold the lock button and the button that you want to lock at the same time for more than 5 seconds.  
- Unlock: Touch and hold the lock button and the button that you want to unlock at the same time for more than 5 seconds again.

### ② VOLUME BUTTON

Touch this button to set the desired volume of water. The volume changes by each touch.

※ When any volume is not selected, 120ml water is dispensed if you touch the dispensing button.

1/3 cup About 120ml  
2/3 cup About 550ml  
One cup About 1500ml

### ③ UV INDICATOR (FILTER RESET)

The UV LED icon blinks when UV LED sterilization process is operating.

※ The UV LED sterilization process prevents bacteria from reproducing.

### ④ ECO(LIGHT) SENSOR

The ECO system works when the illuminance is measured at under 1 lux. by the ECO sensor.

### ⑤ AMBIENT WATER BUTTON / AMBIENT WATER INDICATOR

Touch this button to select the ambient water mode.

※ The icon of the dispensing button lights up in green when the ambient water mode is selected.

※ When any water mode is not selected, ambient water is dispensed if you touch the dispensing button.

### ⑥ COLD WATER BUTTON / COLD WATER INDICATOR

Touch this button to select the cold water mode.

※ The icon of dispensing button lights up in blue when the cold water mode is selected.

### ⑦ DISPENSING BUTTON / VOLUME INDICATOR

1. Touch this button to dispense water.
2. The indicator shows the chosen volume of water.

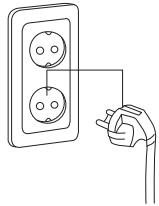
### ⑩ FILTER REPLACEMENT INDICATOR

When the filter replacement cycle has reached its end, the 1st or the 2nd replacement indicator blinks to notify that the filter must be replaced.

※ For your safety and proper use of the product, please read and understand the following before use.

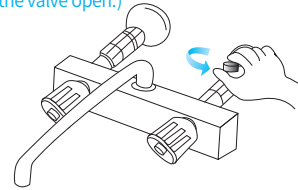
## 1. Plug the power cord.

※ Before plugging, please check if the voltage rate is matched.

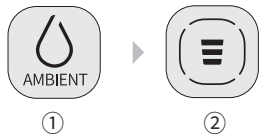


## 2. Open the water supply valve.

※ If water supply valve is closed, the water purifier doesn't work.  
(Except in case of going outside for a long time, leave the valve open.)



### 1) TO DRINK AMBIENT WATER

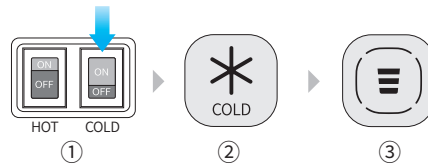


① Touch the 'AMBIENT' button to select the ambient water mode. The icon of dispensing button turns green.

② Touch the 'DISPENSING' button to dispense ambient water. During dispensing water, the circle lineLED blinks.

※ If any volume is not selected, 120ml water is dispensed with touching the 'Dispensing' button one time.  
During dispensing water, you can stop dispensing water by touching the 'Dispensing' button.

### 2) TO DRINK COLD WATER



① Turn on the cold switch at the back of the unit to activate the cold water function. The cold water icon lights up.

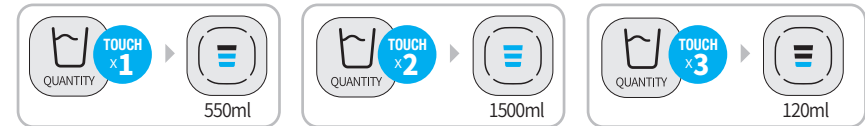
※ In initial use of the product, it takes about 1 hour to get sufficiently chilled water after the cold water function is operated.

② Touch the cold water button to select the cold water mode. The icon of dispensing button turns blue.

③ Touch the 'DISPENSING' button to dispense cold water. During dispensing water, the circle line LED blinks.

※ Before activation the cold water function, make sure to check whether water comes out in the cold water mode.

## 3) FOR PRESET VOLUME DISPENSING



### ① HOW TO SET THE DESIRED VOLUME OF WATER

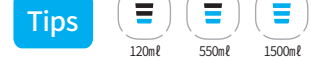
Touch the volume button to set the desired volume water and touch the dispensing button.

※ one bar(120ml) is set by default.

(If you do not choose any volume of water, 120ml water is dispensed.)

### ② HOW TO DISPENSE BY FREE CHOICE

Touch and hold the dispensing button to dispense water. During holding the the dispensing button, water comes out. when you lift your finger, it stops dispensing water. (Except hot water)



※ The amount of water may vary according to the water pressure.  
※ During volume dispensing water, you can stop dispensing water by touching the dispensing button.  
※ In hot water mode, if you do not choose any volume of water, 120ml hot water is dispensed.

## 4) ADDITIONAL FUNCTION

### ① Eco mode

It helps to save an electricity consumption with a machine that intelligently turn off the cooling mode by detecting darkness such as night through the light sensor built-in.

#### ▶ To activate the eco mode

Touch and hold the volume button for more than 4 seconds.

Then, it will be activated after the blue dispensing LED light flickers on and off 3 times with a ding-dong sound.



#### ▶ To deactivate the eco mode

Touch and hold the volume button for more than 4 seconds.

Then, it will be lift after the white dispensing LED light flickers on and off 3 times with a ding-dong sound.



※ Regardless of the eco mode, if the light intensity sensor detect the darkness of surrounding, it will automatically lower the LED brightness on the control panel for the prevention of dazzling.

## ② Button-lock mode

Button-lock mode is for protecting children from any problem by careless use.

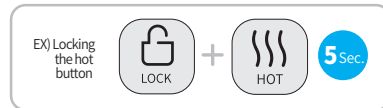
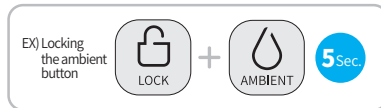
### ▶ Locking all buttons

- Button-lock mode is set with a illumination of lock icon when the lock icon is touched for more than 5 seconds.
- It unlocks the buttons by turning off the LEDs when the lock icon is touched for more than 5 seconds again.
- It is useful when cleaning of the control panel.



### Locking individual button

- ▶ - The only selected button will be locked when the buttons(hot/ambient/cold) to be locked and the lock icon are touched together for more than 5 seconds.
- It unlocks when the selected button locked and the lock icon are touched together for more than 5 seconds.



- ※ If you touch the button locked in a button-lock mode, that button will blink with a buzzer sound.
- ※ If you lock all buttons in an individual button-lock mode, the machine locks all buttons. If you unlock all buttons again, then it turn into the individual button-lock mode.
- ※ Setting will be initialized after pull out the plug and pull in.

## ③ Buzzer ON/OFF function

### ▶ To turn buzzer on

Touch the lock button and the quantity button at the same time for more than 4 seconds.



Then, the buzzer will be turned on after blinking the LED at the upper right corner of the dispensing button 3 times with 'ring' sound.

### ▶ To turn buzzer off

Touch the lock button and the quantity button at the same time for more than 4 seconds.



Then, the buzzer will be turned off after blinking the LED at the lower corner of the dispensing button 3 times with 'ring' sound.

## ④ To change default setting of dispensing water

- It is possible to set a frequently used water as the default mode for more convenient use.

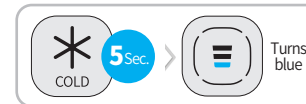
### ▶ Touch the 'AMBIENT' button more than 5 seconds.

Then, the icon of dispensing button turns green and ambient water is set as default.



### ▶ Touch the 'COLD' button more than 5 seconds.

Then, the icon of dispensing button turns blue and cold water is set as default.





# Filter replacement

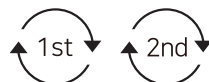
## 1. Filter Replacement Cycle

The filter needs to be replaced regularly.  
If not, the product's water quality may be degraded.

## 2. Alarm for Filter Replacement

When the filter replacement cycle has reached its end, the 1st or 2nd replacement indicator blinks to notify that the filter must be replaced.  
The filter should be replaced when either of below conditions are reached first.

FILTER NAME		Expected Replacement Cycle
1ST FILTER	MICRO CARBON FILTER	3600 liters or 6 months
2ND FILTER	NANOFACT PLUS FILTER	7200 liters or 12 months



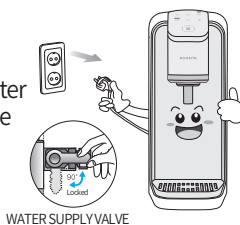
## 3. How to Replace the Filter

: Replace the filter when the filter replacement indicator blinks

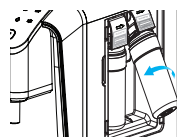
1. Before replacing filters, close the water supply valve.

2. Remove the pressure and water remaining in the filter and pipe by taking out ambient water.

※ A lot of water could spill out unless the pressure is removed.



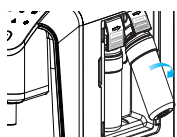
4. Open the filter cover and take out the filter by turning it counterclockwise.



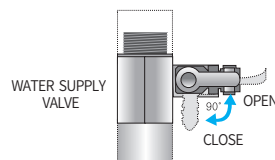
※ Filter replacement cycle  
· MICRO CARBON : 6 months  
· NANOFACT PLUS : 12 months  
(Based on 10 ℓ / Day)

3. Disconnect the power cord.

5. Remove the protection cap of the new filter and insert the new filter into filter connector by turning it clockwise.



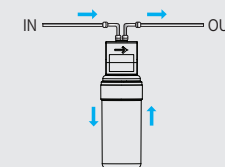
6. Open the water supply valve and connect power cord. And drain out water more than 10 ℓ in the ambient water mode to clean the filters.



# Filter Replacement

During initial installation or replacement of filters, please use the product after doing 'Water Flushing' at least 10 ℓ until white black or bubble water doesn't come out from the filters.

(Water Flushing : the progress that allows water to flow for cleaning alien substance, dust, etc. in the initial use of filters.)



Black carbon dust ack powder may come out after initial installation or replacement of filters.

(It is just the fine powder of activated carbon that improves the taste of water and does not have any affect on the human body.)

## 4. How to Reset the Filter Replacement Cycle : Filter Reset Mode

- ① Touch the "FILTER RESET" button for 3 seconds to enter the filter reset mode on.
- ② HOT, COLD and FILTER RESET buttons blink with the two times of Ring sounds.
- ③ When touching either HOT or Cold button to reset the filter replacement cycle, one of the intended filter in the below table will be reset.

FILTER NAME		Button for Reset
1ST FILTER	MICRO CARBON FILTER	HOT
2ND FILTER	NANOFACT PLUS FILTER	COLD

- ④ The applicable 1st or 2nd replacement indicator blinks and rings three times when the setting is completed.
- ⑤ The filter reset mode off when touching the "FILTER RESET" button for 3 seconds again.

## 5. Cautions

- According to the filter replacement cycle, replace filters regularly.
- If filters are not regularly replaced, it could degrade the water quality.
- The filter replacement cycle may vary depending on feed water quality and consumption.
- Even if your water consumption is not much, following regular filter replacement cycle is recommended.



## Solution to common problems

※ Check the followings before asking A/S.

Problem	Cause	Possible Solution
Insufficiently chilled water	Low power supply	Check voltage rate.
	Cold water switch off	Check if the cold water indicator is on.
No water comes out	Filter s need to be replaced.	Check the filter replacement cycle and contact customer service center.
	Tap Water is shut off .	Disconnect power plug and wait until water comes out.
	Connecting hose bending	If there is a bending in connecting hose, straighten the part.
Low volume of purified water		The amount of water may vary according to water pressure. ※ Standard Water Pressure : 245 kPa
Noise during operation	Working sound of compressor	When the compressor works or stops, there may be noise like water flowing. this noise comes from refrigerant flowing and it is not a problem.
	Boiling Noise	While operating the heater, there may be boiling noise and it is not a problem.

## Solution to common problems

※ Check the followings before asking A/S.

Problem	Cause	Solution
Decreased water production	Filters need to be replaced.	Replace filters.
	Low pressure feed water	If low pressure water is supplied to the unit, less amount of filtered water is produced.
Water leakage	Poor water pipe connection	Close the water supply valve and contact customer service center.
Unpleasant water taste or odors	The water filtration device has not been used for a long time.	Get rid of water in the water purifier.
	Wrong usage environment for a long period	Replace all the filters and connecting hoses.
Particle in water	It is bubble caused by water dispensing.	After 10 minutes, if the particle still remains, contact customer service center.

※ If a problem comes up, contact a customer service center and get filter replacement or repair service.

※ We can not take responsibility for any damage caused by replacing filters by third party who is not our service man.

## Solution to common problems

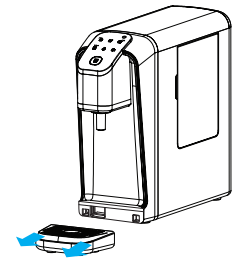
※ Check the followings before asking A/S.

Problem	Cause	Possible Solution
<b>Cold water comes out, but hot water doesn't come out.</b>	Checking the hot water indicator.	Please check if the hot switch at the back side of the unit turns on.
	Malfunction of the thermostat or the heater	Turn off hot switch and contact customer service center. (If there is a overheating in the hot device, the manual thermostat cuts off electricity for safety.)
<b>Cold water comes out, but hot water doesn't come out.</b> (Hot water temperature indicator is blinking.)	Malfunction of sensor	If hot water does not comes out and the hot water temperature indicator keeps blinking, please disconnect power plug contact customer service center.
<b>No signal on the hot water LED</b>	Deactivating the safety mode of hot water	Dispense more that 2ml water in the hot water mode to activate the hot function. If the hot water LED does not still light up, please contact customer service center.
<b>In case of hissing sound Operation of safety valve because of the steam generated</b>	Low water supply due to the connecting hose bent	Please check the hose whether it is bent or not. If there is no a problem in the hose connection, please contact customer service center.
	High power supply	Please check voltage rate.
<b>Hot water cut-off during operation</b>	Filter replacement period expired or a level of water flow is low.	Please check the filter replacement time and contact customer service center.
	In normal condition	Hot water may be cut off because it is constructed without a water tank and do flash heating when water comes out. it is not a problem. ※ To prevent burning, put the cup close to the faucet while dispensing hot water.

## Cleaning method

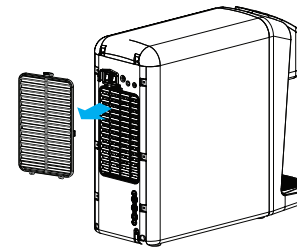
### 1. Cleaning the drip tray

- Please empty out water of the drip tray once a week.  
※ By forming ice inside the cold tank, small volume of water comes out and drains into the drip tray. This is normal and not a malfunction.
- Detach the drip tray by pulling out it and wash it with a pH-neutral detergent.



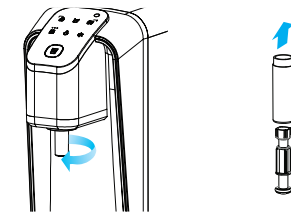
### 2. Cleaning the air vent

- Remove dirt and dust from the air vent by using a vacuum cleaner once a month.
- ※ If the air vent is blocked with dust, it will affect cooling system negatively.



### 3. Cleaning the faucet

- Detach the faucet and wash in running water and dry it with a dry dish towel.
- ※ Do not wipe the faucet with a scrubbing brush. It could cause corrosion.



## Cleaning Cycle

Cleaning	Cycle	Method
<b>Exterior</b>	once a week	Clean the exterior with water-soaked, soft cloth. (Never use Benzene, gasoline or thinner to clean the unit.)
<b>Drip tray</b>	frequently	Frequently clean the drip tray with a neutral detergent.
<b>Fitting / Tubing</b>	more than once within 2 years	Change the fitting and tubing once a two years when you replace filters.
<b>Water faucet</b>	Daily	Detach the water faucet by turning it counterclockwise and wash in running water. When you attach the water faucet again, fix it firmly, otherwise water can be leaked.

## Specifications

Product name	HOT & COLD WATER PURIFIER	COLD WATER PURIFIER
Model no.	WHP-3000	WHP-3010
Power Supply	AC 220-240V/ 50-60Hz	
External dimensions	180(W)*514(D)*432(H)mm	
Product weight	13.7kg	
Recommended water consumption	10ℓ / a day (4 people based)	
Cold water capacity	about 0.9ℓ	
Cold water temperature	about 4°C-12°C	
Motor power consumption	90W(0.6A)	
Heater power consumption	2.5KW	-
Hot water capacity	Instant heating system	-
Hot water temperature	40°C- 85°C(Selectable)	-
Service condition	Working pressure : 147-294kPa	
	Working temperature : 5~35°C	
	Usable feed water : Tap water	

### ■ Filtration System

Model No.		WHP-3000/3010
Filtration system	MICRO CARBON FILTER (Activated carbon)	O
	NANOFACT PLUS FILTER (Cellulose, Compressed carbon)	O

- ※ Exterior and specification of the product could be changed for performance improvement.  
 ※ Filter replacement cycle could be changed depending on water consumption.

## Warranty card

### PRODUCT WARRANTY

Product	Model	<input type="checkbox"/> WHP-3000 <input type="checkbox"/> WHP-3010	
	Date of Manufacture		
Date of Purchase	Year	Month	Day
Customer's Name			
Dealer's Name			

### WARRANTY GUIDE

- The warranty period is 12 months from date of purchase.
- In following case, the product will be repaired at cost.
  - After expiry of free warranty period.
  - Malfunction of caused by careless or abnormal use.
  - Malfunction of caused by natural disaster.
  - In case this manual has been lost.

MEMO

MEMO