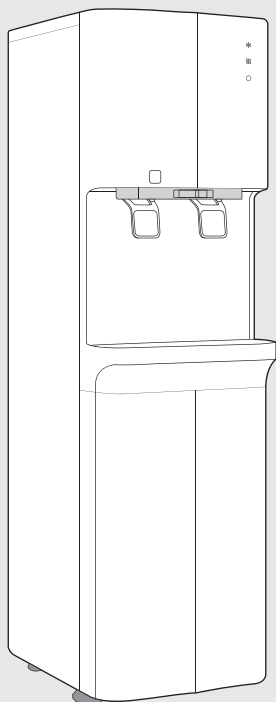


We cannot take any responsibility
for any damage caused by not using
our genuine filter or part.

HOT&COLD Water Dispenser

Operation Manual

WHP-3900 / WHP-3910-RO



◆ Product Safety

- Precautions 2~5

◆ FOR INFORMATION

- Name of each part 6
- Purification System 7
- Features 8
- How to use 9~12
- Maintenance 13
- Filter replacement method & Cycle 14~15
- ECO System 16
- Solution to common problems 17~18
- Cleaning method & Cycle 19~20
- Specifications 21
- Warranty Card 22

※ Please read this manual for proper use and safety.
※ Please be sure to keep this manual as it contains the product warranty.
※ We can not take responsibility for any damage caused by using the unauthorized filters.

Precautions

- Please read carefully following precautions to avoid unpredictable dangers and damages.
- Depending on the degree of danger and damage that could occur by improper use, precautions are divided into 3 types as below.



If not observed, serious injury or even death could occur.



If not observed, serious injury or property damage could occur.



If not observed, slight injury of property damage could occur.



This mark is for calling attention to dangers caused by improper use. Please read carefully and follow the precautions.

Precautions for installation



Please do not install the unit at a moist place like bathroom, shower room or outdoor.

- ▶ Failure to do cause a fire or electric shock.



Do not let the inlet hose be twisted or bended.

- ▶ Failure to do cause water and electric leakage.



Avoid heat and direct sunlight.

- ▶ Failure to do cause deformation of the exterior.



Place the unit on a level surface and hard floor.

- ▶ Failure to do cause malfunction.



Connect the unit only to the cold water pipe.

- ▶ It is harmful for filters, if connected to hot water.



Place the unit on a level surface and hard floor.

- ▶ Failure to do cause malfunction.

Precautions for power supply



This product must be plugged into AC120V / AC220-240V outlet.

- ▶ Failure to do cause a fire or electric shock.



Before operation, please wipe dust or other foreign substances off on the plug.

- ▶ Failure to do cause a fire or electric shock.

Precautions



DANGER

Please do not try to bend, tie or pull the power cord.

- ▶ Failure to do cause a fire by electric shock.



DANGER

Please do not disassemble or modify the plug.

- ▶ Failure to do cause a fire or electric shock.



DANGER

Please do not use when the plug is damaged or swinging.

- ▶ Failure to do cause a fire or electric shock & leakage.
- ▶ If the supply cord is damaged, it must be replaced by the manufacturer, its service agent or similarly qualified persons in order to avoid a hazard.



DANGER

Before replacing filter, please unplug the power cord.

- ▶ Failure to do cause electric shock.



DANGER

The outlet should be rated for more than 16A. Use a separate outlet for the unit.

- ▶ Do not plug too many cords into the outlet. Failure to do cause a fire.



DANGER

Please do not plug in or unplug the power cord with wet hands.

- ▶ It could cause electric shock.

Precautions for use



DANGER

Do not subject the unit to severe physical shock.

- ▶ It could cause electric shock.



DANGER

Do not insert sharp wire or screwdriver into the unit.

- ▶ It could cause malfunction or electric shock.



CAUTION

Do not tilt the unit more than 45°C while moving it.

- ▶ It could cause malfunction.



CAUTION

Do not put heavy stuff on the unit.

- ▶ It could cause damage to the unit.



DANGER

Do not attempt to repair, disassemble or transform.

- ▶ It could cause a fire or electric shock.



WARNING

Be careful not to get burned by hot water.

- ▶ It could cause scald.



CAUTION

Do not move the unit during the operation.

- ▶ It could cause malfunction.



CAUTION

When water supply is cut off, unplug the power cord.

- ▶ It could cause malfunction.

Precautions

Precautions for use



DO NOT use Benzene or gasoline when cleaning the product.

- Failure to do so can cause discoloring, peeling and/or damage to the exterior of the product.



MAKE SURE that the cold water tank lid is securely shut, before using.

- Failure to do so can cause insects and/or foreign objects to enter the tank.



MAKE SURE to use the genuine parts for installation.
(Tubing, Water valve, Filter)

- Failure to do so can cause water leakage and get damaged.



DO NOT install the product in severe and extreme temperatures.

- Failure to do so can cause overheating or freezing.



When discarding parts/filters and/or disposing the product entirely, please adhere to local guidelines.

- Failure to do so can cause environmental pollution.



When replacing filters, always use genuine filters.

- Failure to do so can cause poor performance and poor water quality.



Close the main water supply valve and unplug the power cord when not using the unit for a long time. Before use it again, drain more than 3 liters of hot and cold water.

- Failure to do so can cause a fire or water leakage.



- This appliance can be used by children aged from 8 years and above and people with reduced physical, sensory or mental capabilities or lack of experience and knowledge if they have been supervised or instructed of the appliance in a safe way and understand the hazards involved.
- Children shall not play with the appliance.
- We can not take responsibility for any damage caused by replacing filters or repair by third party who is not our service man.

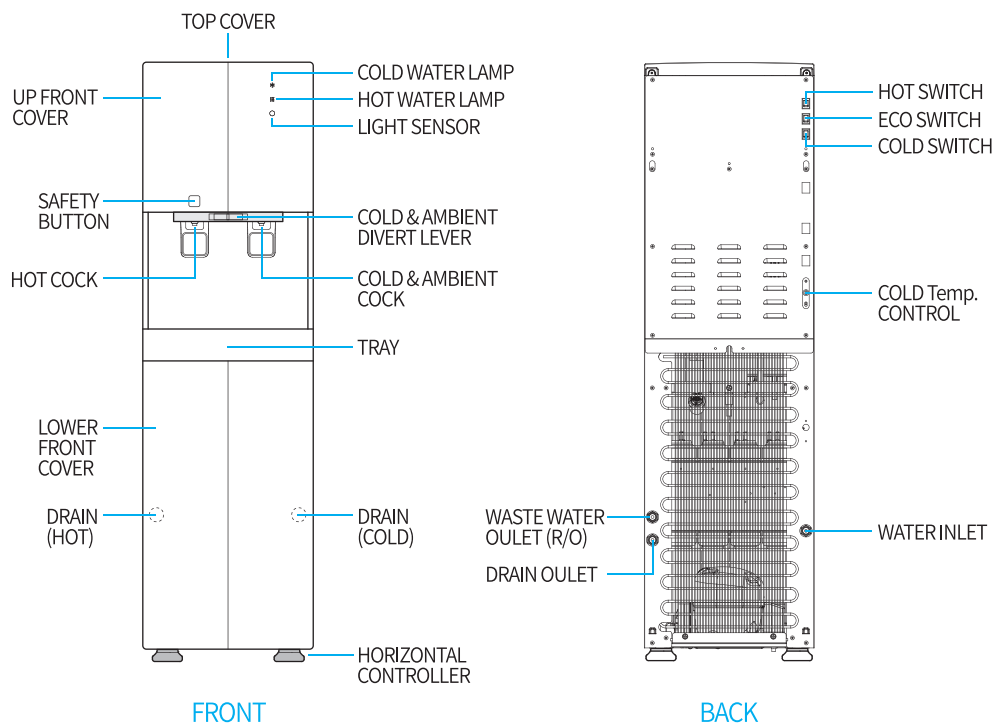
Precautions



- When you discard the unit or filter, follow the proper process of disposal.
It could cause environmental pollution.
- When installing the unit, use our genuine parts.
It could cause water leakage or damage to the unit.
- When replacing filter, use our genuine one.
It could affect water quality.
- Do not install the unit at the place where may cause freezing trouble.
- This appliances are provided with refrigerant gas, ISOBUTANE(R600a).
- The appliance must be transported and moved, taking maximum care to ensure that it is not excessively struck or shaken.
Failure to observe the above rule, could put the appliance out of service.
- Keep ventilation openings, in the appliance enclosure or in the built-in structure, clear of obstruction.
- Do not damage the refrigerant circuit. If damage to the refrigerating circuit, with possible outflow of refrigerating gas, could create risks of explosion caused by external sparks or flames.
- Do not, on any account, run your appliance if it appears to be damaged.
- In case of damage, contact the Service Center, ventilate the room where the appliance is located, and avoid flames or jobs on the appliance.

Name of Parts

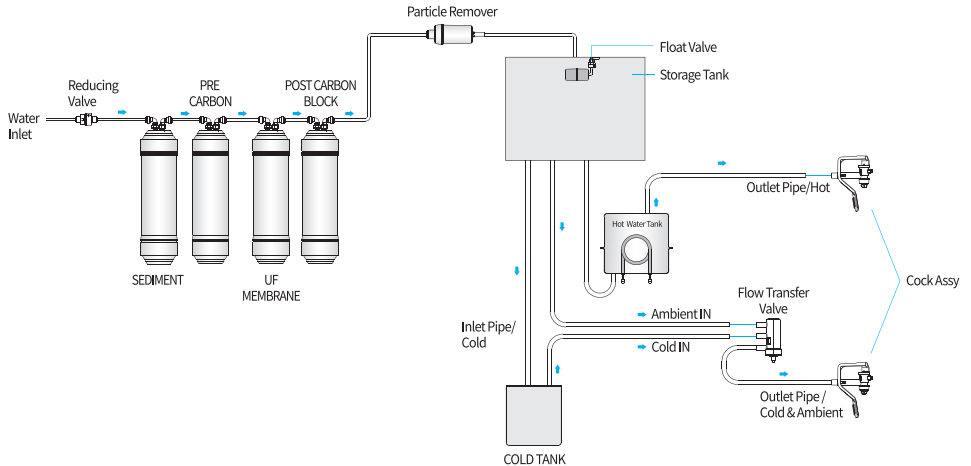
Name of Parts



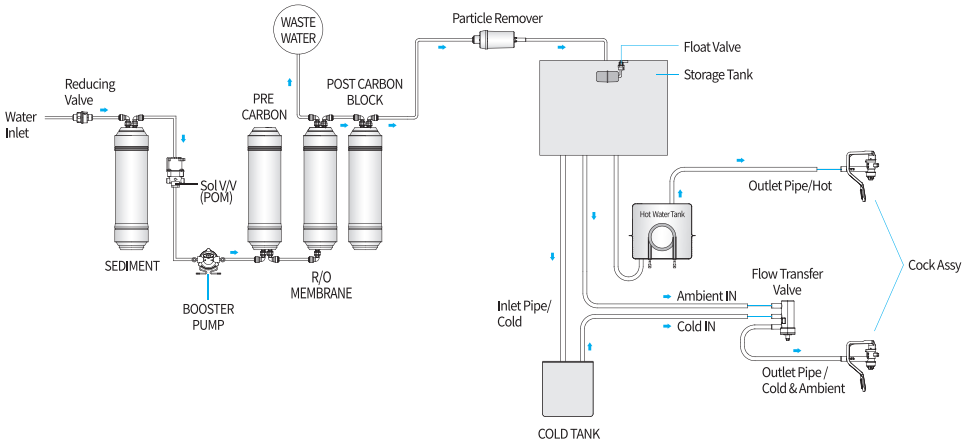
Purification System

Purification System

WHP-3900 (UF Type)



WHP-3910-RO (R/O Type)



- Because Fitting/ Tubing and Etc. are consumable parts, so it is recommended to replace them when replacing filters.
(2 years of replacement cycle)

Features

◆ Continuous water dispensing function

By this function, it is available to dispense a large amount of water at once.

◆ Child lock for hot water safety

It is designed with double safety for children. When dispensing the hot water, push the safety button first, then pushing the hot water cock.

◆ Separable water faucet

Separable water faucet makes cleaning simple for enhanced hygiene.

◆ Temperature control available for cold water (Ambient - Light Cold - Cold)

It is possible to select cold water or ambient water (room temperature water) according to the user's preference.

◆ Direct water supply from the water supply facilities

Easily get the purified water at a convenient and low price.

◆ Thorough filtration system

WHP-3900 : Sediment Filter(removal contaminants) → Pre-Carbon Filter(removal of residual chlorine) → UF membrane(removal of general bacteria, impurities and remaining mineral water) → Post-Carbon Block Filter(removal of contaminants)

WHP-3910-RO : Sediment Filter(removal contaminants) →

Pre-Carbon Filter(removal of residual chlorine) →

R/O membrane(removal of general bacteria, impurities and remaining mineral water) →

Post-Carbon Block Filter(removal of residual chlorine and odor)

◆ Safety for hot water function

Anti-overheating function(manual bi-metal reset) & automatic temperature control function (automatic bi-metal reset) provides safety from hot water overheating.

◆ Automatic water level control

Automatic water level control function ensures durability of the filters & unit.

◆ Fresh water supply

Enjoy 4~12°C of cold water and 70~90°C of hot water any time you want.

The best fresh water as it blocks dust and bacterial contamination.

◆ Power-saving features

The ECO sensor automatically stops water heating to save electricity when it notices that illuminance around the unit darkens at night.

◆ Economic / practical advantages

Easy to install and use.

◆ High capacity water tank

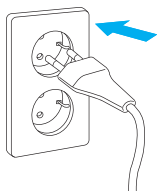
It is available to dispense a plenty of water with 21.5ℓ water tanks
(HOT: 4.2ℓ, COLD: 6.3 ℓ, AMBIENT: 11.0 ℓ)

How to use

※ For your safety and proper use of the product, please read and understand the following before use

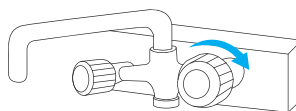
1. Plug the power cord.

※ Before plugging, please check if the voltage rate is matched.

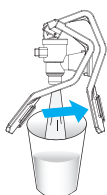


2. Open the water supply valve.

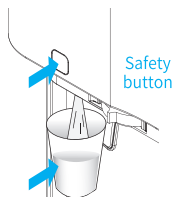
※ If water supply valve is closed, the water purifier doesn't work.
(Except in case of going outside for a long time, leave the valve open.)



3. How to operate



COLD COCK



HOT COCK



Caution

Before turn on the hot switch, please be sure to check water dispensing in hot function.

※ Failure to do so can cause malfunction.

※ After installation, dump the purified water over 20ℓ and then take the clean water.

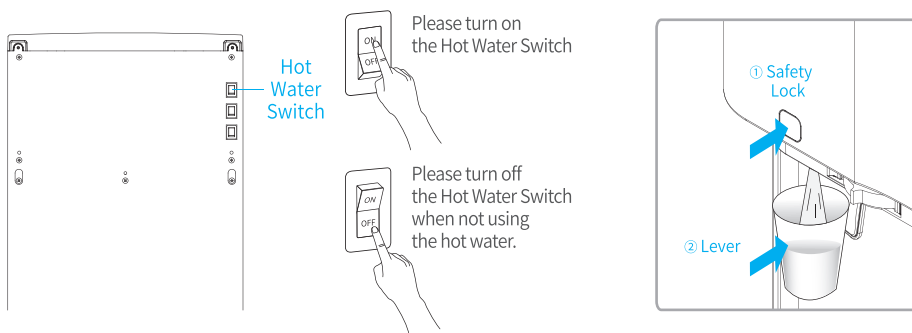
※ If you do not use the water purifier for a long time, dump about 1~2ℓ of the purified water and then take the clean water.

How to use

※ For your safety and proper use of the product, please read and understand the following before use

1) How to use Hot Water Function

- ① Turn on the Hot Water Switch located at the back of the product.
- ② When Hot Water Lamp is turned on, the How Water Function will begin.
- ③ Please allow approximately 30 minutes for the hot water to heat up after the Hot Water Switch is turned on.
- ④ Please allow sufficient time for the Hot Water Tank to fill up with water.
- ⑤ How to dispense Hot Water
 - Please press the Hot Water Safety Lock and then push the hot water lever to dispense hot water.
 - To stop dispensing Hot Water, please pull your hand away from the hot water lever.



※ When hot water is not needed, turn off the Hot Water Switch to reduce power consumption.

How to use

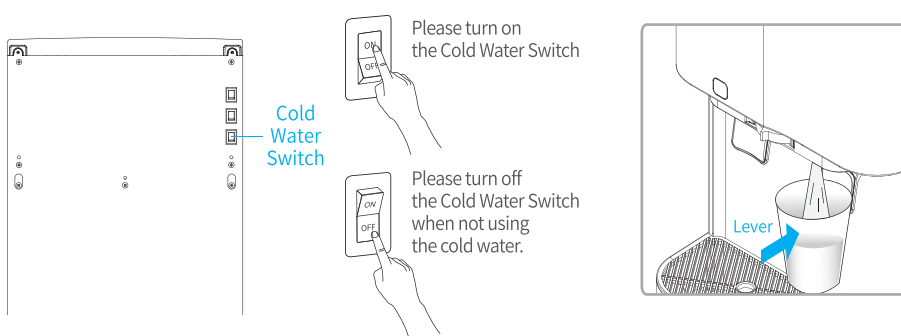
※ For your safety and proper use of the product, please read and understand the following before use

2) How to use the Cold Water Function

- ① Please turn on the Cold Water Switch to enable chilling.
- ② Please allow approximately 60 minutes to chill the water in the Cold Tank.
- ③ How to get cold water
 - Press the Cold Water Dispense Lever.
 - To stop dispensing Cold Water, please pull your hand away from the lever.

3) How to enable Continuous Cold Water Dispensing

- ① Pull the lever forward to dispense cold water without stopping.
- ② Return the lever to its original position to stop water dispensing.



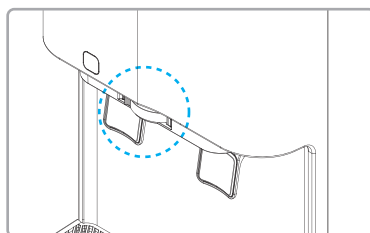
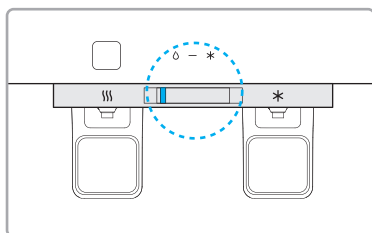
How to use

※ For your safety and proper use of the product, please read and understand the following before use.

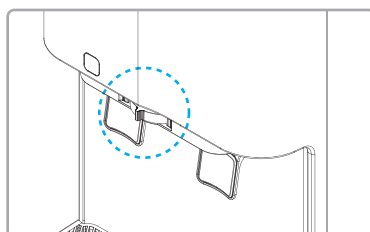
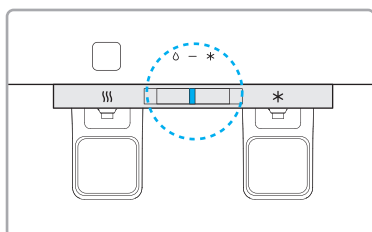
5. How to control the cold and ambient water dispensing

The closer the valve is to the cold water side, that will be the more cold water. And the more it is located to the purified water side, that will be the more room temperature water comes out.

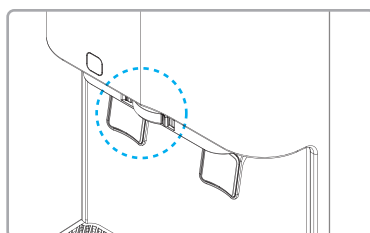
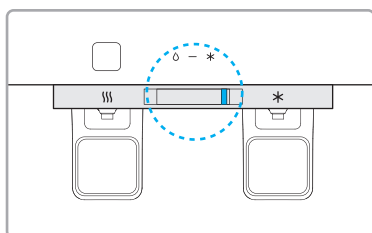
1) Ambient Water



2) Light cold water



3) Cold water



Maintenance

Always unplug the power cord before cleaning the product

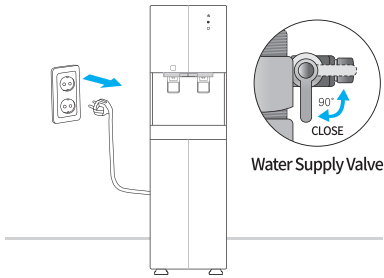
- Never use detergent or chemicals.
 - Wipe the front and back of the product with water-soaked soft cloth.
 - Do not directly spray water on the surface of the product.
 - If dust or other foreign substance has accumulated on the condenser, wipe off with water-soaked soft cloth.
-

If the product is not used for a prolonged period

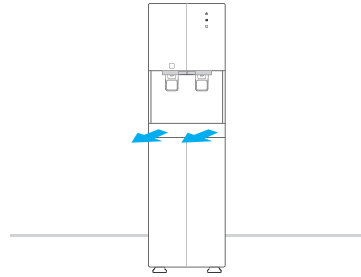
- Water can be drained completely by loosening the hot and cold water caps.
 - Wipe dry any remaining surface moisture from each part of the product damp surface will create rust.
 - Wrap the product in its original vinyl and corrugated paper used for shipping, before storage, to prevent from being damaged by rust, dust and other foreign substances.
※ Unplug the power cord.
-

Filter replacement method & Cycle

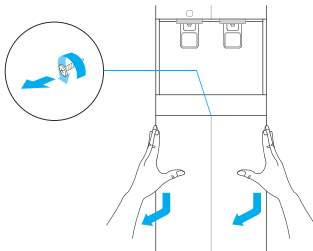
1. When replacing a filter, unplug the power cord and close the water supply valve.



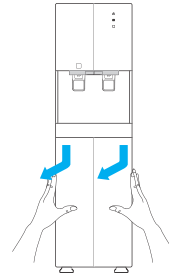
2. Remove the drip tray.



- 3-1. After unscrewed on lower front panel, push it down and pull forward to remove it.



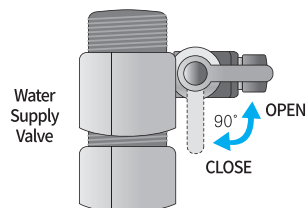
- 3-2. Push down on the lower panel and pull forward to remove it.



4. Please remove the old filters with a Fitting separator and insert the new filters in reverse order.

- Always check for water leakage after replacing filters.
- Make sure that each filters are in the proper order of purification process.

5. Once filters have been replaced securely, please make sure to open the Water Supply Valve and plug the power cord.

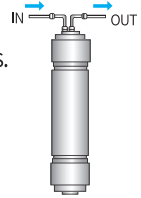


- Please clean the filters at least one time before use.

Filter replacement method & Cycle

■ Before replacing any filters, always unplug the power cord and close the Water Supply Valve.

- Black dust ash powder may come out after initial installation or replacement of carbon filter. it is just the fine powder of activated carbon that improves the taste of water.
- Proceed the filter flushing at least 10L of water till any black&white water or bubble doesn't appear from the filter when initially installing or replacing the filters.
(Water Flushing : the progress that allows water to flow for cleaning alien substance, dust, etc. in the initial use of filters.)
- It is recommended to clean the tank inside periodically for better hygiene.



- Follow the filter replacement cycle to keep the best water quality.
- Untimely filter changes that exceed the recommended replacement cycle will significantly reduce filter performance and degrade the water quality.
- The filter replacement cycle may vary depending on feed water quality and consumption.
- Always use genuine filters for filter replacement.
(Water quality and performance shall be affected negatively if using non-genuine filters.)
※ It is strongly recommended that an authorized technician performs all filter exchange service.
※ Manufacturer/Distributor is not responsible for any service provided by an unauthorized third-party technician.
- The filter replacement cycle is recommended regardless of the water volume used.
- Effective purification capacity means the minimum water purification capacity that can effectively remove contaminants without cleaning, regenerating, or replacing the filters.
- The period is based on 20ℓ use in a day for home use. (4 people based)

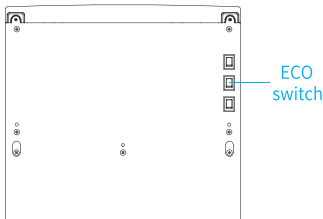
Division	1ST STEP	2ND STEP	3RD STEP		4TH STEP
Filter	SEDIMENT FILTER	PRE CARBON FILTER	UF MEMBRANE	R/O MEMBRANE	POST CARBON BLOCK
Replacement Cycle	Abt. 8 months	Abt. 8 months	Abt. 20 months	Abt. 24months	Abt. 12 months

ECO System

ECO function helps to reduce power consumption by automatically turning off the heating functions when no light surrounding the product is detected by the illuminance sensor. When brightness is detected by the illuminance sensor, ECO function is terminated to automatically begin heating again.

How to operate ECO Function (Illuminance Sensor)?

- ① Turn on the ECO switch at the back of the product.
- ② The HOT water lamp will turn Amber.
- ③ When activated, the HOT water lamp will turn green.
 - ECO SW ON (Day) -HOT water lamp : Amber
 - ECO SW ON (Night) -HOT water lamp : Green



Please turn on the ECO switch



Please turn off the hot water switch when not using the hot water.

Solution to common problems

※ Please refer to the common troubleshooting solutions before contacting customer service center.

Problem	Expected Cause	Solution
Insufficiently heated water	Low power supply	Check if the power supply is applied with the rated voltage in use, and if not, apply with the rated voltage in use.
	Hot water switch off	Check to make sure that the hot water switch is turned on.
Insufficiently chilled water	Low power supply	Check if the power supply is applied with the rated voltage in use, and if not, apply with the rated voltage in use.
	Cold water switch off	Check to make sure that the cold water switch is turned on.
No water comes out	Filter Change required	Check the replacement cycle and contact service center.
	Water supply is cut off	Leave the power unplugged and re-start with filtration when the power is supplied.
	Connecting hose bending	If there is a bending in connecting hose, straighten the part.
No heating	Temperature Controller Shut Down/Heater Malfunction	Turn off the hot water switch and contact local customer service center. (Temp.Controller automatically shuts of power supply to hot water tank to prevent overheating.)
Abnormal Hot & Cold Water temperature	Heavy water consumption	High volume of water consumption will cause the water temperatures to fluctuate. Please allow 5-10 minutes for the temperatures to recover.
Noisy Sound	Compressor Operating Sound	When the compressor is activated, it is normal to hear sounds of the refrigerant flowing through the system. (It is not malfunction. And depending on the temperature change inside the machine, some parts shall be shirked or expanded so there will be make a sound "clicking".)

Solution to common problems

※ Please refer to the common troubleshooting solutions before contacting customer service center.

Problem	Expected Cause	Solution
Low water production	Filters need to be replaced.	Replace filters.
	Low pressure feed water	Depending on the water pressure of the environment, water production will vary.
Water Leakage	Poor Connection to Water Supply	Shut off water supply valve and contact local customer service center immediately.
Unpleasant water taste or odors	Post carbon block filter expired.	Check the replacement cycle for Post carbon block filter and contact customer service center.
	Not used for more than 3 days	After draining the hot water and cold water over 3L, use the unit.
	Poor Environment Conditions	Clean the hose of cold water and cold water tank.
Particles shown from the purified water	Bubbles when the water supply	If the bubbles from water is not settled down after 15 minutes, please contact the local customer center.

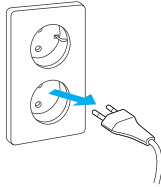
※ If a problem comes up, contact a local customer service center and get filter replacement or repair service.

※ We can not take responsibility for any damage due to the filter replacement by third party who is not our service man.

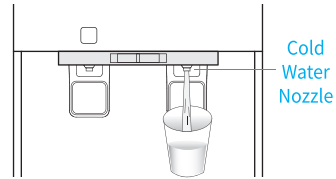
Cleaning method & Cycle

COLD TANK & HOT TANK CLEANING

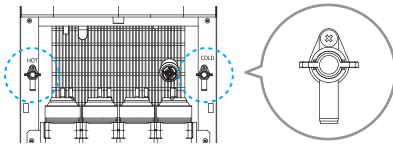
1. Close the water supply valve and unplug the power cord.



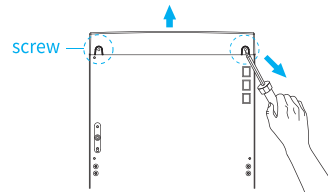
2. Drain all water in the cold tank by dispensing it from the cold water nozzle.



3. Remove the lower panel and open the drain valve to drain the remaining water completely.
 - Please be careful when draining out the hot water as it may cause severe burns.



4. Unscrew the two screws on the left and right at the back of the product and remove the top cover.

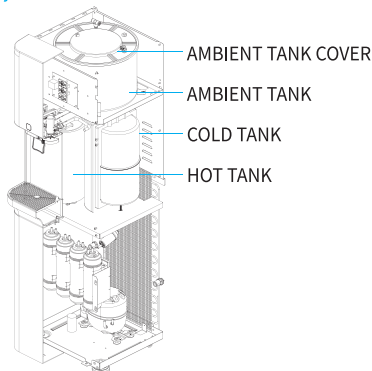


5. Remove the ambient tank cover.

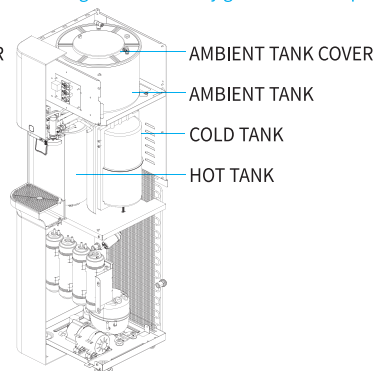
- Please be careful not to damage the rubber packing when removing the ambient tank cover. Please use caution to prevent injury because the ambient tank is made out of stainless steel.

6. Clean the cold tank by flushing it out with water. After washing with water, make sure to close the drain valve and then put the lid on the water tank.

- Before use, entirely close the ambient tank cover in the unit. Insects or foreign substance may get inside of the product.



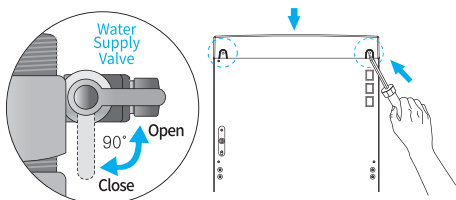
WHP-3900 (UF)



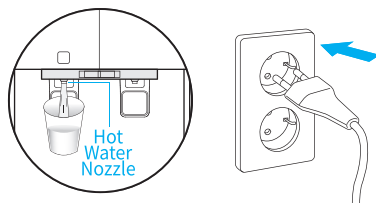
WHP-3910-RO

Cleaning method & Cycle

7. Open water supply valve and check for any water leakage until the cold tank is completely full. Then, put the cold tank cover back on top of the tank.



8. After checked whether dispensed out the hot water from the hot water nozzle or not, plug the power cord.



9. Please monitor the product for a day for any leakage.

- If there is any water leakage, please contact the local customer service center immediately.

Cleaning Cycle

Cleaning	Cycle	Method
Exterior	Once a week	Clean exterior with a non-abrasive soft cloth. (Never us Benzene, gasoline or thinner to clean the product.)
Drip tray	Frequently	Clean the drip tray with a neutral detergent frequently.
Fitting / Tubing	More than every 2 years	Check all fitting and tubings when change the filter. Replace fittings and tubings, if necessary.
Water intake Nozzle	Once a day	Unscrew the nozzle in a counterclockwise direction to separate it. Then thoroughly clean the nozzle openings with a sterilized swab. After cleaning, please screw the nozzle back on tightly.

Specifications

Product Name		HOT&COLD WATER PURIFIER
Model No.		WHP-3900 / WHP-3910-RO
Power Supply		AC120V / AC220-240V / 50Hz or 60Hz
Recommended water consumption		10ℓ/day (4 people based)
Tank Capacity	Hot	Abt. 4.2ℓ
	Cold	Abt. 6.3ℓ
	Ambient	Abt. 10.5ℓ
Motor power consumption		120W (1A) / 160W (0.9A)
Heater power consumption		750W / 850W
Cold temp. control		THERMOSTAT
Hot temp. control		BI-METAL(Automatic)
Overheat protection device		BI-METAL(Manual Reset)
Condenser		WIRE CONDENSER TYPE
Permitted Water Pressure		147~490kPa
Permitted Water Temperature		5~35°C
Weight		WHP-3900 Abt. 36kgs / WHP-3910-RO Abt. 40kg
External Demansions		370(W) × 480(D) × 1304.5(H)

Filteration Sytem (Filter component)

Model No.		WHP-3900	WHP-3910-RO
Filteration system (Filter component)	SEDIMENT FILTER (Felt P.P)	○	○
	PRE-CARBON FILTER (Activated Carbon)	○	○
	UF MEMBRANE FLTER (Polysulfone)	○	
	R/O MEMBRANE FILTER (Polyamide)		○
	POST CARBON BLOCK (Activated block carbon)	○	○

※ Exterior and specification of the product can be changed for performance enhancements.

※ Filter Exchange Periods may vary depending on the evironment and tap water quality.

Warranty card

PRODUCT WARRANTY

Product	Model	<input type="checkbox"/> WHP-3900 <input type="checkbox"/> WHP-3910-RO	
	Date of Manufacture		
Date of Purchase	Year	Month	Day
Customer's Name			
Dealer's Name			

WARRANTY GUIDE

1. The warranty period is 12 months from date of purchase.
 2. In following case, the product will be repaired at cost.
 - a) After expiry of free warranty period.
 - b) Malfunction of caused by careless or abnormal use.
 - c) Malfunction of caused by natural disaster.
 - d) In case this manual has been lost.
-

MEMO